

QUARTERLY HIGHLIGHTS

- Despite a change of venue due to weather, the Waitangi Tūwharetoa ki Pukawa Festival was a great success.
- Taupō Airport's new terminal was completed, blessed, and welcomed its first passengers.
- The iconic Kinloch Triathlon returned.
- The Mangakino community showed a high level of interest in community engagement events to discuss concepts for the Mangakino lakefront redevelopment.
- While Cyclone Gabrielle was not a highlight, the way the community pulled together to deal with it was.
- Council asked the community for feedback on its Recreation and Sport Strategy.
- The district was buzzing with visitors as Taupō hosted the Ironkidz and Ironman events over consecutive weekends.
- The Oceania Triathlon Cup was held in Wharewaka.
- A new weighbridge is being installed at the Tūrangi Transfer Station, which will help Council provide more accurate and timely data on waste minimisation.
- The newly established Tūrangi Co-Governance Committee, created by Mana Whakahono partners Ngāti Tūrangitukua and Taupō District Council, held its inaugural meeting.
- The Taupō Town Centre Transformation project was blessed and officially opened, with a street party well attended by locals and visitors alike.
- To ensure children are safe to walk, bike, or scooter to school, Council introduced lower speed limits of 30km/h around many of the district's schools.
- The Taupō District community generously donated to the Mayoral Relief Fund to help raise more than \$16,000 for the cyclone-hit Wairoa District in Hawke's Bay.
- Council asked for the community's feedback to help shape the draft Annual Plan 2023-24.
- Te Ihirangi, Taupō's first Regional Destination Management Plan, was launched.

To read these news stories and more head to: www.taupo.govt.nz/news



The new lakefront ātea space seen from above.

CELEBRATIONS AS MAJOR TAUPŌ TOWN TRANSFORMATION COMPLETED

Thursday 9 March was a massive day in Taupō as we celebrated not one but two official openings and the completion of two of the biggest projects our district has seen in recent years.

Prime Minister Chris Hipkins and Regional Development Minister Kiritapu Allan attended a dawn blessing of the new lakefront development at Roberts Street, Taupō, together with a great turnout of locals and those who worked on the project. This beautiful new area in front of a strip of restaurants and cafés has already become the jewel in Taupō's crown. Its focal point is a new ātea (meeting space) with a magnificent carved pou surrounded by a set of features signifying the 13 tributaries of Lake Taupō, thanks to the efforts of Tūwharetoa artists Delani Brown and Kingi Pitiroi. The area surrounding the ātea has a mixture of paths, grassed areas and a viewing platform across the lake.

The blessing was followed by a community street party on Saturday 11 March, and it was wonderful to see so many people enjoying this new shared space and admiring the artwork. Roberts Street in this area

is no longer a through road, it is now a pedestrian-friendly zone with a 10km/h speed limit and vehicles are discouraged. Please enter it by car only if you need mobility parking.

The completion of this area also marked the end of our 20-month long Taupō Town Centre Transformation project. This has seen Tongariro Street and Lake Terrace become more pedestrian and shopper-friendly and the town centre linked to Tongariro Domain. Through traffic not needing to access the town centre should now be using Spa Road and Tītiraupenga Street.

Our appreciation goes to our hard-working contractors Camex Civil and Downer for bringing this vision to life despite the challenges of Covid-19, and to our project managers and staff, but most of all to the community for their patience while the work was underway.

NEW AIRPORT TERMINAL BUILDING A LANDMARK FOR TAUPŌ DISTRICT

Business at Taupō Airport's new terminal has been, ahem, taking off since it opened to passengers in February.

The \$9.72 million terminal was blessed in February and formally opened by PM Chris Hipkins and Minister Kiritapu Allan on 9 March, by which time it had already been welcoming passengers for a month. In a feat of logistics, morning flights to Wellington and Auckland departed from the old terminal on Tuesday 7 February, with the return evening flights from both cities delivering passengers to the new terminal.

Designed by Paul Raven of Taupō's Shelter Architects and built by local contractors Watts Construction, the new terminal incorporates stunning photography by Jeremy Bright and artistic elements by Tūwharetoa artist Delani Brown that link the building firmly to its place in the heart of the Taupō district. Features include a kōhatu (stone) from the quarry on Mt Tauhara and magnificent rimu trunks from the Pureora Forest to the west of Lake Taupō.



Paul Raven of Shelter Architects (left), Taupō Airport operations manager Kim Gard, Chris Johnston of the Taupō Airport Authority, Trevor Watts of Watts Construction, Mayor David Trewavas, and Taupō Airport general manager Wayne Wootton.

The old terminal has since been demolished and this area will be developed into a green space to complement the new airport building. One of the other changes at the airport is that parking charges have now been introduced, at a rate which is comparable to other regional airports. However, if you're just there to drop off or pick up passengers, fear not – the first 30 minutes is free. Rates thereafter start from \$2 per hour, up to a maximum of \$14 per day.

TE MATAAPUNA NEARLY READY TO OPEN ITS DOORS



*E toro atu te ringa pōwhiri o Pihanga ki te hapori o Tūrangi
Nau mai, haere mai ki ngā whenua o Waipapa
Hei tu hikitia, hei tu hapainga ki tēnei whare hou o tātou*

This new facility at Tūrangitukua Park is gifted the name Te Mataapuna to reflect the many springs of this whenua. Ngāti Tūrangitukua, as landowners of the park, granted approval for this community facility and worked with Taupō District Council to make the project a reality.

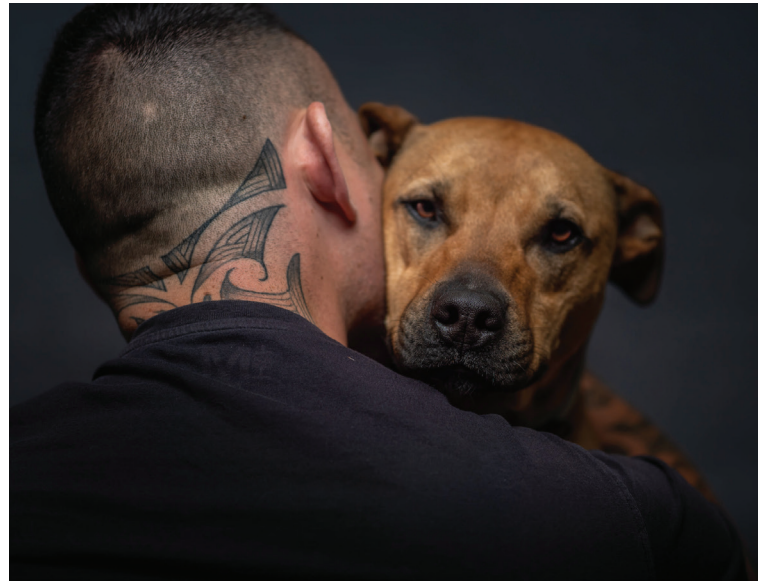
Te Mataapuna will provide a warm, dry space with changing areas for sports teams and a place to host visitors from outside the district. Local sports clubs are looking forward to putting it to good use. Te Mataapuna will be managed by a collective of its main user groups.

The project team has been working with local artists Te Maari and Mikaere Gardiner and carver Te Ururangi Rowe on design features to make the facility unique to Tūrangi.

The Tūrangi community has wanted a facility like this for many years. The \$3.5 million asset is the first major project completed under the Mana Whakahono-a-Rohe co-governance agreement between Taupō District Council and Ngāti Tūrangitukua.

Te Mataapuna will be formally opened on Saturday 13 May.

Me kotahi ra



PAWS WHAT YOU'RE DOING AND UPDATE YOUR DETAILS FOR DOG REGISTRATIONS

Keep an eye out for canine correspondence from Taupō District Council because it is almost dog registration time.



Now is the time to make sure your dog owner details are up to date so we can fetch your data and send out your dog registration notice for 2023-24. These will be hitting your inbox, or mailbox, in early June so please take a moment to ensure we have the correct details for you and your canine companion.

Taupō District Council compliance and regulatory manager Ross McDonald says dog registration fees help to fund a range of services that are designed to help dogs, their owners and the wider community.

"These include things like providing and maintaining facilities for the care, welfare and return of lost, stray, impounded or seized dogs, and dog waste bags at our open spaces," he says.

"The fees also help our team with other activities like the resolution of dog issues such as barking, roaming, aggressive and dangerous dogs, monitoring and enforcing the Dog Control Act, bylaws and policy, and education programmes for schools and community groups.

"It's really important your details are up to date so we can get in touch in June when it is time to start thinking about dog registration. This year's dog registration tags will be yellow - these help our team quickly identify whether or not a dog has been registered."

If you have moved house or your contact details have changed, please let us know to help ensure the dog registration process is a smooth one.

If we have your email address you will receive your 2023-24 dog registration notice via email. If not, feel free to opt in online and receive this year's canine correspondence straight to your inbox, which not only saves time, but also saves paper. It's a free service and it's easy to sign up.

There are several ways you can update your details. Visit taupo.govt.nz/dogs to do it online, drop into any of our customer service centres, phone 08 376 0899 or email the team at info@taupo.govt.nz.

WINTER IS COMING! LET'S BURN SMOKE-FREE FOR BETTER AIR QUALITY IN THE TAUPŌ DISTRICT



As the temperature starts to drop, Taupō District households fire up their wood burners to heat their homes.

Unfortunately, Waikato Regional Council air quality monitoring has shown this is linked to poor air quality in the late hours of the night and early hours of the morning when households use domestic wood burners.

The good news is this issue can be remedied, but we need your help. Replacing your old wood burner with a low-emission alternative such as a heat pump has the largest impact, but we understand that this is not affordable for all households.

Fortunately, anyone with a wood burner can make small changes, at no additional cost, to enjoy warmer, longer-lasting, lower-maintenance fires. In fact, with good technique, it's even possible to burn completely smoke-free.

The trick is to use only dry wood (and a little paper to get things going of course) and to follow tried and tested steps to ensure good airflow.

Six steps to smoke-free success:

- 1. Layer** - Start with a generous layer of paper knots. Newspaper is great and adding scrunched-up pieces to the front as well makes it easier to light. Then, add your kindling, leaving lots of air gaps. A criss-cross pattern helps to elevate your logs to create good air flow. Next, stack two or three smaller logs around it in a pyramid shape.
- 2. Light** - Light your fire. Leave the door slightly open and set the air flow to high until the kindling is well alight. Then shut the door.
- 3. Look** - After 15 minutes, step outside to check your chimney. If you're doing it right, there should be no visible smoke at all. If you still see some, don't worry, it just means there's room to improve next time.
- 4. Load** - Add a second load of smaller logs. Then wait another five to 10 minutes until the wood is charring and making a 'bricking' pattern.
- 5. Reload** - Add one or two bigger logs. After about an hour, these should be well alight and creating a nice bricking pattern too. At this point, you can reload with a few more of your bigger logs as required to keep it burning well.
- 6. Relax** - About 15 minutes after adding the new big logs, you can turn the airflow down to keep your toasty fire burning longer.

Once you've mastered it, you should see no smoke at all. If you do still see some though, keep persevering, it can take some time to get it just right.

For more information on improving air quality in Taupō, head to www.taupo.govt.nz/airquality. Let's work together to improve the air quality in our district this winter.

Go green. Go paperless.

Get your rates and other council information by email.

To opt-in, scan here or visit taupo.govt.nz/gogreen



Opting in is a convenient way to receive your rates invoice and other council correspondence via email which not only saves time, but also saves paper. It's a free service and it's easy to sign up.