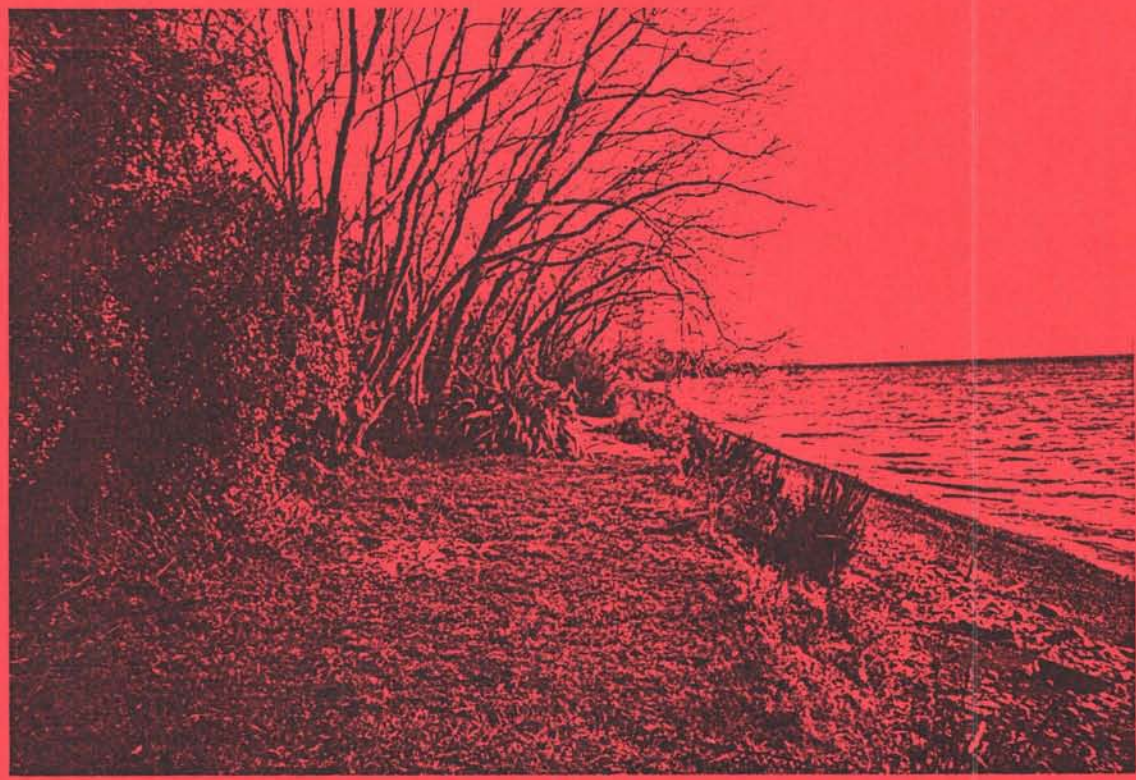


TE RANGIITA / WAITETOKO

LAKESIDE RESERVE

Management Plan 1993



**Te Rangiita/Waitetoko Lakeside Reserve
Management Plan
1993**

**PREPARED BY : COMMUNITY SERVICES DIVISION
 TAUPO DISTRICT COUNCIL**

TABLE OF CONTENTS

INTRODUCTION

TABLE OF CONTENTS

- 1 BACKGROUND
- 2 MANAGEMENT GOAL, OBJECTIVES & POLICIES
- 3 OVERALL MANAGEMENT GOAL
- 4 GENERAL MANAGEMENT
 - 4.1 *ADMINISTRATION AND CONTROL*
 - 4.2 *BUILDINGS*
 - 4.3 *PERMITTED USES*
 - 4.4 *DOGS*
 - 4.5 *SIGNAGE*
 - 4.6 *HORSES*
 - 4.7 *CAMPING*
 - 4.8 *CARPARKING AND VEHICLE ACCESS TO THE RESERVE*
 - 4.9 *PUBLIC ACCESS*
 - 4.10 *UTILITY SERVICES*
- 5 RECREATION
 - 5.1 *OPEN SPACE*
 - 5.2 *RECREATIONAL ACTIVITIES AND FACILITIES*
- 6 SOCIAL
 - 6.1 *SOCIAL ASPECTS*
 - 6.2 *HEALTH*
 - 6.3 *HISTORIC*

7	ENVIRONMENT
	<i>7.1 VEGETATION MANAGEMENT</i>
	<i>7.2 SCENERY</i>
	<i>7.3 LANDSCAPE</i>
	<i>7.4 WILDLIFE MANAGEMENT</i>
8	COMMERCIAL ACTIVITIES AND LEASES
	<i>8.1 COMMERCIAL ACTIVITIES, LEASES AND LICENCES</i>
9	RESERVE CONCEPT
10	ACTION PLAN
11	PLAN REVIEW
12	ACKNOWLEDGEMENTS

Te Rangiita/Waitetoko Lakeside Reserve Management Plan 1993

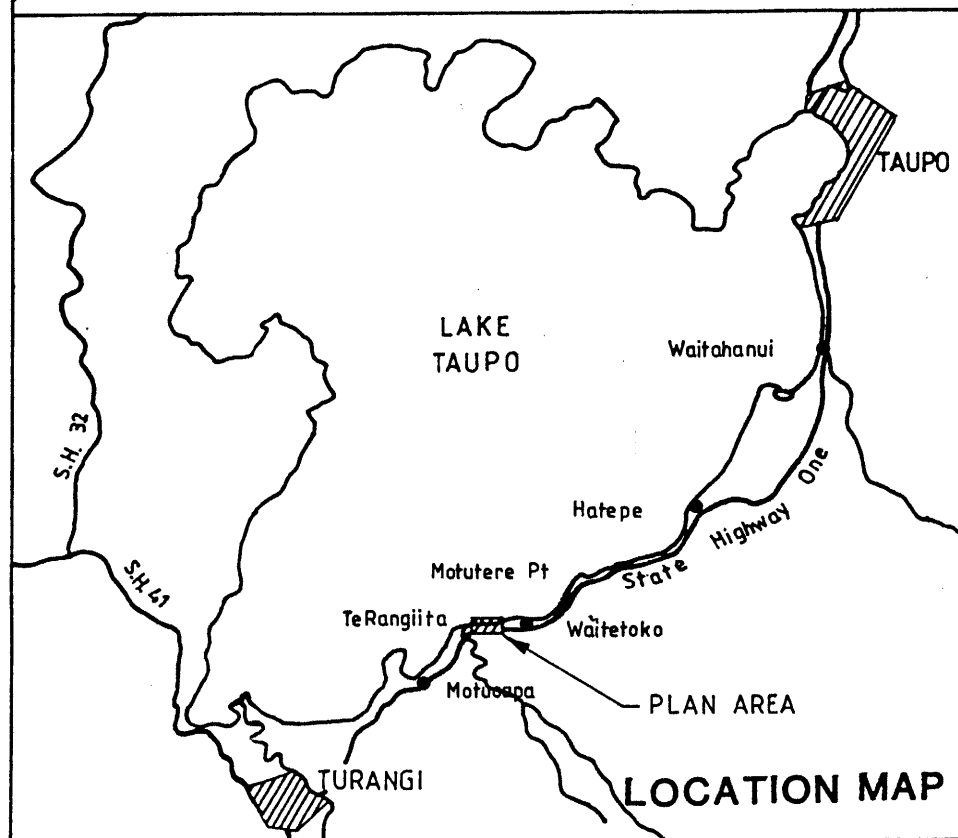
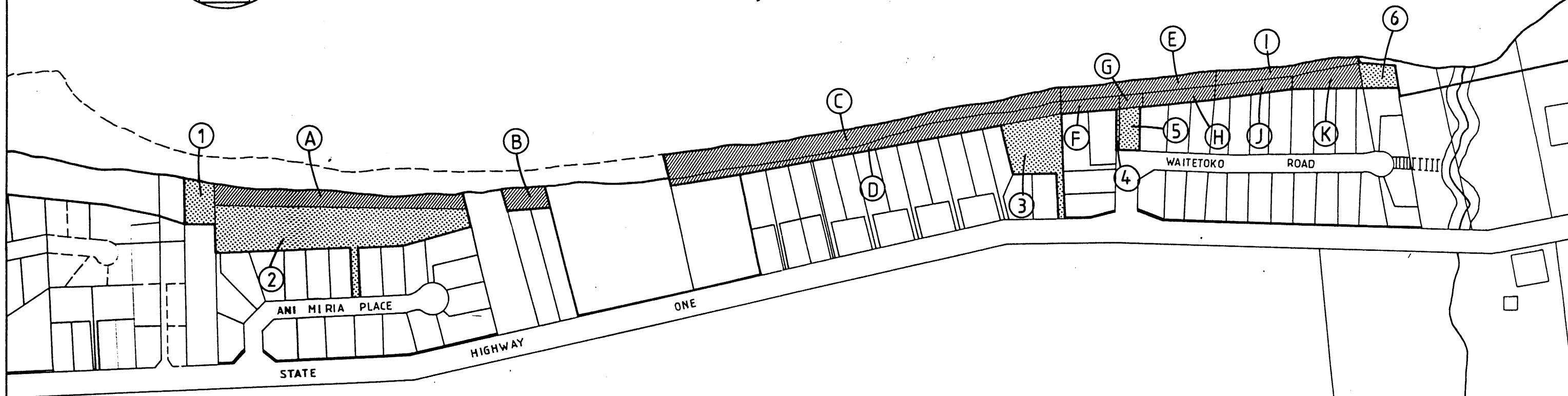
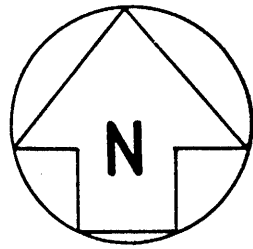
1 Introduction

This Management Plan has been prepared by the Taupo District Council's Community Services Division to facilitate the most appropriate use and the proper and continued management of the reserve by providing guidelines for its development, planning, management and ultimate use.

The Reserves Act 1977 requires that management plans are prepared for reserves areas.


In conjunction with the requirements of the Reserves Act 1977, a suggested goal and set of policies and objectives were formulated to assist with the management of Te Rangiita/Waitetoko Lakeside Reserve. It is the intention that the Management Plan should be used as a reference and working document to facilitate the further development and use of the reserve and to ensure the decision making and administration is compatible with the stated goal, objectives and policies. The Management Plan process also provides opportunities for the public to have a say in how the reserve is to be utilised and managed.





 RECREATION RESERVE

1	LOT 1	DPS 26162	0.0957 ha
2	LOT 21	DPS 16567	0.7342 ha
3	LOT 4	DPS 12494	0.2491 ha
4	LOT 19	DPS 15863	0.0063 ha
5	SEC 7	SO 46560	0.0698 ha
6	LOT 7	DPS 27549	0.0587 ha

 LOCAL PURPOSE RESERVE (ESPLANADE)

A	LOT 22	DPS 16567	0.4186 ha
B	LOT 3	DPS 4422	0.0700 ha
C	SEC 4	SO 45159	0.4805 ha
D	LOT 5	DPS 12494	0.2023 ha
E	SEC 5	SO 46560	0.1264 ha
F	LOT 11	DPS 15863	0.0435 ha
G	SEC 6	SO 46560	0.0207 ha
H	LOT 18	DPS 15863	0.0648 ha
I	SEC 10	SO 47672	0.0960 ha
J	LOT 20	DPS 18560	0.0860 ha
K	LOT 21	DPS 18560	0.0935 ha

**LEGAL PLAN
TE RANGIITA/WAITETOKO
LAKESIDE RESERVE
MANAGEMENT PLAN**
NOT TO SCALE

Te Rangiita/Waitetoko Lakeside Reserve Management Plan 1993

1 Background

The Plan is the first stage of the overall Lakeside Reserve Management Plan. This first section comprises of 3 hectares of Taupo District Council reserves between Waitetoko Road and Ani Miria Place approximately 38kms south-west of Taupo and 14kms north-east of Turangi, located on the shore of Lake Taupo. Adjacent to the reserve is a residential area mostly used for holiday homes. The reserve is a popular picnicing, playing and swimming area particularly over the summer holiday period.

The reserve comprises areas of esplanade reserve immediately adjacent to the lake and areas of recreation reserve on the landward side. The reserve was created at the time the adjacent land was subdivided for residential use. It was created as a buffer between Lake Taupo and the Te Rangiita/Waitetoko residential areas and to provide public access along the lake-edge.

The reserve will be administered as a Recreation Reserve pursuant to Section 17 of the Reserves Act 1977. As such it is :

- 1 'For the purpose of providing areas for the recreation and sporting activities and the physical welfare and enjoyment of the public, and for the protection of the natural environment and beauty of the countryside, with emphasis on the retention of open spaces and on outdoor recreational activities, including recreational tracks in the countryside.'
- 2 It is hereby further declared that, having regard to the general purposes specified in subsection [1] of this section, every recreation reserve shall be so administered under the appropriate provisions of this Act that -
 - a) The public shall have freedom of entry and access to the reserve, subject to the specific powers conferred on the administering body by Sections 53 and 54 of this Act, to any bylaws under this Act applying to the reserve, and to such conditions and restrictions as the administering body considers to be necessary for the protection and general well being of the reserve and for the protection and control of the public using it.
 - b) Where scenic, historic, archaeological, biological, geological, or other scientific features or indigenous flora or fauna or wildlife are present on the reserve, those features or that flora or fauna or wildlife shall be managed and protected to the extent compatible with the principal or primary purpose of the reserve :

Te Rangiita/Waitetoko Lakeside Reserve Management Plan 1993

Provided that nothing in this subsection shall authorise the doing of anything with respect to fauna that would contravene any provision of the Wildlife Act 1953 or any regulations or proclamation or notification under the Act, or the doing of anything with respect to archaeological features in any reserve that would contravene any provision of the Historic Places Act 1954.

- c] Those qualities of the reserve which contribute to the pleasantness, harmony, and cohesion of the natural environment and to the better use and enjoyment of the reserve shall be conserved.
- d] To the extent compatible with the principal or primary purpose of the reserve, its value as a soil, water, and forest conservation area shall be maintained.

The natural resources of the reserve are influenced by the volcanic history of the Taupo area and the series of eruptions of Lake Taupo which occurred around 1800 years ago.

The Taupo pumice alluminium that makes up the reserve is the result of these eruptions in 120 AD. It is comprised of pumice alluminium and pyroclastics. Pumice can sometimes be found on the beach areas of the reserve and floating on the surface of Lake Taupo.

The reserve is fairly sheltered from southerly winds by the residential area. However, it is exposed to the north and the west.

Since the reserve land was acquired it has been developed as a grassed, open space area with some trees providing shade and shelter. It has generally been used for access to Lake Taupo to enable people to partake in water-related recreation and for picnicing, walking and other informal recreational activities.

The reserve has an extremely pleasant outlook across Lake Taupo and is important for protecting the environment on the margin of the lake.

Te Rangiita/Waitetoko Lakeside Reserve Management Plan 1993

2 Management Goal, Objectives & Policies

The following sections of this Management Plan relate to management and development of the reserve. The goal, objectives and policies for future management of Te Rangiita/Waitetoko Lakeside Reserve are all outlined below.

As the terms goal, objective and policy are often interpreted in a variety of ways, they have been defined here as they are used for the purposes of this Management Plan.

Goal An all encompassing statement of what is desired to be achieved, the purpose, destination or object of effort.

Objective Outlines what is to be achieved in each policy sector in order to attain the goal.

Policy May be a position statement or a proposal for action.

A policy statement will comprise of two sections :

- 1 The policy statement.
- 2 Implementation : How the policy is to be implemented, management action to be undertaken.

Te Rangiita/Waitetoko Lakeside Reserve Management Plan 1993

3 Overall Management Goal

To utilise and adminiser the Te Rangiita/Waitetoko Lakeside Reserve pursuant to Sections 17 and 23 of the Reserves Act 1977 as a Lakeshore Recreation Reserve for the enjoyment and physical well-being of the public and for the protection of the natural environment and to maintain public access to Lake Taupo and along the lake-edge.

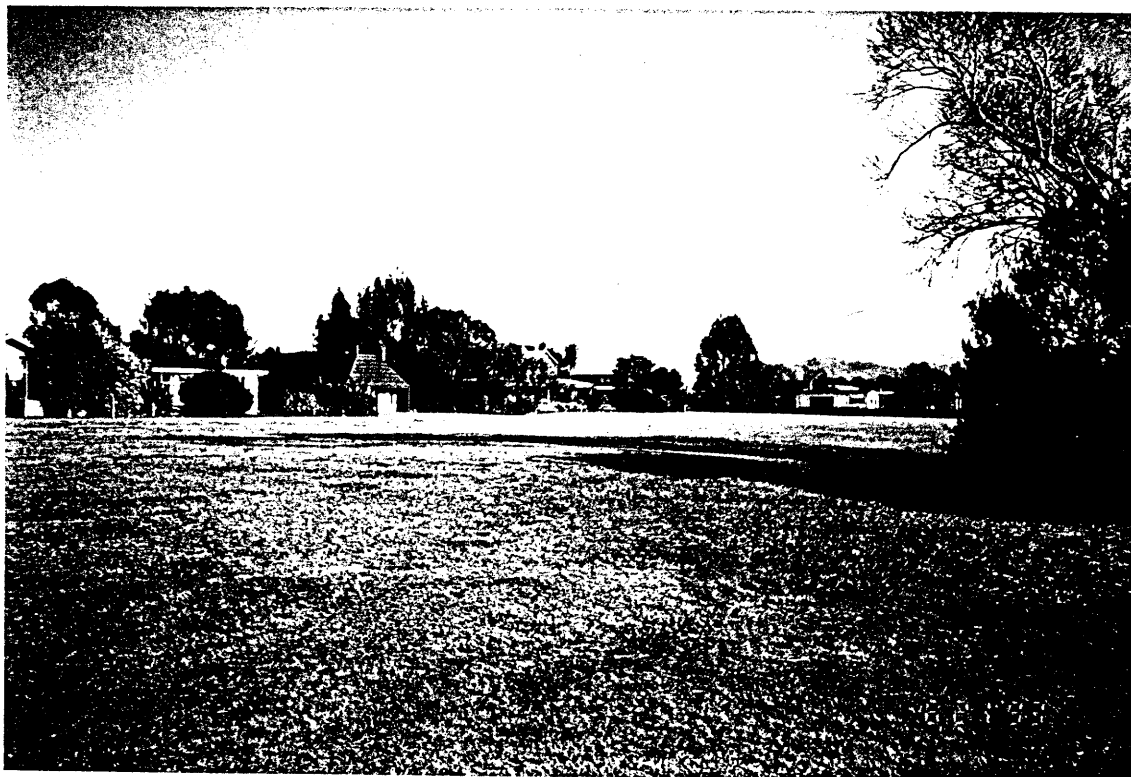


Te Rangiita/Waitetoko Lakeside Reserve Management Plan 1993

4 General Management

O B J E C T I V E

To manage Te Rangiita/Waitetoko Lakeside Reserve primarily as a Lakeshore Recreation Reserve in accordance with the principles set out in the Reserves Act 1977.



Te Rangiitā/Waitetoko Lakeside Reserve Management Plan 1993

P O L I C I E S

4.1 ADMINISTRATION AND CONTROL

Policy

To administer the reserve as a Recreation Reserve under the Reserve Act 1977 and in accordance with this Management Plan and Parks and Reserves Bylaws, with control being vested in the Taupo District Council.

Implementation

The reserve will be administered by the Taupo District Council in accordance with the requirements of the Reserves Act 1977, the objectives and policies outlined in this Management Plan and the Parks and Reserves Bylaws.

Where the policies in this Management Plan conflict with the Parks and Reserves Bylaws, the Management Plan shall prevail.

Day to day maintenance of the reserve will be the responsibility of the Turangi Area Manager and staff.

Any activity or development not provided for under the policies contained in this Management Plan or the Reserves Act 1977 will not be permitted.

Any major change of objectives and policies should facilitate a plan review.

Te Rangiita/Waitetoko Lakeside Reserve Management Plan 1993

4.2 *BUILDINGS*

Policy

To prohibit buildings, except a toilet block, on the reserve.

Implementation

A toilet block may be required, this may be a temporary or permanent building.

No other buildings will be permitted on the reserve.

Te Rangiita/Waitetoko Lakeside Reserve Management Plan 1993

4.3 PERMITTED USES

Policy To permit community, social and recreational activities compatible with the intent of the Reserves Act 1977 at the reserve.

Implementation During the summer period the reserve is visited by people who wish to partake in various recreational activities eg jogging, walking, picnicing, swimming, social games of volleyball, rugby, soccer, etc.

People like to drive their vehicles on to the reserve to enable them to picnic adjacent to their vehicles and for convenience, therefore the riding of bicycles and driving of vehicles on the reserve will be permitted on certain parts of the reserve provided people are driving in a safe manner ie not exceeding 5kmph and not causing damage to the reserve. Barriers will be erected on parts of the reserve to stop cars driving along the lake-edge.

Public safety will be promoted wherever possible and people are encouraged to respect other reserve users.

Boats may be beached on the lakeshore reserve provided they are not tied in a manner which restricts public access along the beach.

Boat owners are not permitted to store their boats on the reserve or beach them and leave the unattended.

Te Rangiita/Waitetoko Lakeside Reserve Management Plan 1993

4.4 DOGS

Policy

Dogs are permitted on the reserve provided they are under the control of those responsible for them.

Implementation

Dogs are allowed on the reserve provided they are under the control of their owners or those responsible for them. They are not required to be on a leash. Where dogs are causing a problem, owners may be prosecuted.

Those responsible for any dog(s) on the reserve should clean up after their animals.

Te Rangiita/Waitetoko Lakeside Reserve Management Plan 1993

4.5 *SIGNAGE*

Policy

To erect sufficient signs at the reserve and in appropriate places to ensure adequate directions for the public.

Implementation

Signs may be erected on the reserve to indicate locations of public accessways and to interpret facilities on the reserve to users.

Signs should be constructed in a manner to minimise the potential for vandalism.

Signs should be designed and of a colour, size, shape etc to be in harmony with the reserve. Natural materials and tonings sympathetic to the environment should be used where possible.

No signs shall be erected on the reserve except for those directly relevant to reserve management or to assist public use of the reserve, or temporary signs (ie. maximum one month) advertising an event to be held at the reserve eg. raft race, triathlon.

All signs must comply with the requirements of the District Plan.

Te Rangiita/Waitetoko Lakeside Reserve Management Plan 1993

4.6 HORSES

Policy

The riding or tethering of horses on the reserve is not permitted.

Implementation

Horse-riding is not permitted on the reserve due to the proximity to the lake and potential damage to the reserve.

Where horses are found on the reserve owners may be prosecuted.

4.7 CAMPING

Policy

Camping overnight, including overnight stays in vehicles, will not be permitted on the reserve.

Implementation

The reserve is not seen as a suitable site for camping. Adequate provision for camping has been made within the district.

Camping will not be permitted on the reserve and anyone found doing so will be removed by Taupo District Council staff or the appropriate authorities and may be subject to prosecution.

Te Rangiita/Waitetoko Lakeside Reserve Management Plan 1993

4.8 **CARPARKING AND VEHICLE ACCESS TO THE RESERVE**

Policy To permit carparking and vehicle access to parts of the reserve.

Implementation There is a need to provide carparking on and vehicle access to the reserve to encourage use of the area.

Carparking and vehicle access will be restricted to certain parts of the reserve by the construction of barriers in appropriate locations.

4.9 **PUBLIC ACCESS**

Policy To make the reserve accessible to the public taking into account the provisions of Section 53 of the Reserves Act.

Implementation The reserve will generally continue to be accessible to the public at large.

When necessary part or all of the reserve may be closed to the public subject to the provisions of Section 53 of the Reserves Act 1977.

Te Rangiita/Waitetoko Lakeside Reserve Management Plan 1993

4.10 *UTILITY SERVICES*

Policy

To ensure that any utility services provided through the reserve are placed underground and located where they will not compromise reserve values or uses and to ensure that the servicing authorities enter into an easement agreement for the right to lay services in the reserve.

Implementation

Placement of services in the reserve is not desirable however, if such services must be located in the reserve, the servicing authority will be required to enter into an easement agreement pursuant to the provisions of the Reserves Act 1977. Where this easement is to be granted for a function of Council the easement will still be required, but will not need to be registered on the title to the reserve.

Te Rangiita/Waitetoko Lakeside Reserve Management Plan 1993

5 Recreation

O B J E C T I V E

To utilise the Te Rangiita/Waitetoko Lakeside Reserve for recreational activities associated with the lake and informal recreational, social and community activities.



Te Rangiita/Waitetoko Lakeside Reserve Management Plan 1993

P O L I C I E S

5.1 OPEN SPACE

Policy

To retain the reserve as a predominantly open space area.

Implementation

Public opinion in the submissions on the preparation of this management plan largely favoured retaining the reserve as an open space area for passive and informal recreation. The reserve will be maintained as open space and kept mown to a standard suitable to allow intended uses to be undertaken.

Te Rangiita/Waitetoko Lakeside Reserve Management Plan 1993

5.2 RECREATIONAL ACTIVITIES AND FACILITIES

Policy To utilise the reserve as a recreational reserve for passive and informal recreation.

Implementation Informal recreational activities such as picnicing, children's play, walking, volley-ball, jogging etc take part on the reserve and public opinion greatly favoured its retention as such.

People wishing to partake in water based activities can do so from the reserve.

Activities that are not compatible with the reserves intended uses will not be permitted eg. motor cross activities, formal playing fields, etc.

Seating and possibly some new picnic tables will be provided within the reserve as finance permits.

Clubrooms or community buildings will not be permitted on the reserve.

Only facilities that enhance the publics enjoyment of the reserve and are compatible with the intended uses of the reserve will be provided for.

Te Rangiita/Waitetoko Lakeside Reserve Management Plan 1993

6 Social

O B J E C T I V E

To enhance the social and physical well-being and enjoyment of the public through their utilisation of the Te Rangiita/Waitetoko Lakeside Reserve.



Te Rangiita/Waitetoko Lakeside Reserve Management Plan 1993

P O L I C I E S

6.1 SOCIAL ASPECTS

Policy

To enhance the social well-being of the public through the utilisation of the reserve as an open space recreation reserve for passive and informal recreation, community and social activities.

Implementation

Leaving the reserve as an area where people feel they can go to relax and/or partake in recreational activities within a safe environment is important to the well-being of people and provides a great deal of social benefit.

The reserve will be retained as a Lakeshore Recreation Reserve where the public can go to undertake recreational activities and obtain benefit through social contact with other reserve users.

Te Rangiita/Waitetoko Lakeside Reserve Management Plan 1993

6.2 HEALTH

Policy

To promote the health and physical well-being of the people of Te Rangiita and Waitetoko and visitors by encouraging them to undertake recreational activities and enjoy the outdoor environment.

Implementation

Partaking in recreational activities increases people's quality of life and health and utilisation of the reserve will assist this.

6.3 HISTORIC SITES

Policy

To identify and protect any historic sites or other historic features on the reserve and where possible to interpret these to the public.

Implementation

Historic sites are protected under the provision of the Historic Places Act 1980 and any historic sites may be interpreted to the public.

Te Rangiita/Waitetoko Lakeside Reserve Management Plan 1993

7 Environment

O B J E C T I V E

To protect features of scenery, history, geology and ecology found in the Te Rangiita/Waitetoko Lakeside Reserve and to protect and enhance the reserves landscape character and the margins of Lake Taupo.



Te Rangiita/Waitetoko Lakeside Reserve Management Plan 1993

P O L I C I E S

7.1 VEGETATION MANAGEMENT

Policy

To provide shade, shelter, aesthetic value and diversity to the reserve through the planting of vegetation in appropriate areas and to selectively remove unwanted vegetation where appropriate.

Implementation

In the open space area on the reserve, it is appropriate to plant vegetation for shade, and to improve the visual appeal. This will be based on landscape planning practices and may consist of both native and exotic plants as deemed appropriate. However, emphasis will be placed on the planting of native species, including : Kowhai, Kohuhu, Fivefinger, Lancewood, Korokio, Kanuka, Toetoe, Koromiko and Tarata.

Management of trees, bush and other vegetation on the reserve shall be in accordance with the requirements of Section 42 of the Reserves Act 1977 and Noxious Plants Act 1978.

Pruning and extraction of trees or bush shall have a minimal impact on the reserve (birdlife, wildlife, erosion etc) and where appropriate provision shall be made for replacement planting or restoration.

Planting will be kept to a minimum in the open space area.

Fertility, water supply, drainage and general conditions of the soil shall as far as practical be managed to ensure that desirable plant life is sustained in good health. Weed control will be undertaken as required.

Te Rangiitā/Waitetoko Lakeside Reserve Management Plan 1993

7.2 SCENERY

Policy

To protect and enhance the scenic quality of the reserve.

The scenic beauty of the reserve and its surrounding area is one of the major attractions of the reserve. Captivating views of Lake Taupo can be obtained from various areas within the reserve.

Implementation

The scenic qualities of the reserve will be protected and enhanced.

Tree planting will be designed to protect and enhance the visual and aesthetic appeal of the reserve.

7.3 LANDSCAPE

Policy

To enhance and protect the landscape character of the reserve.

Implementation

The landscape character of the reserve is very important to the areas appeal to the public. The theme of the reserve is for open space, informal recreation and relaxation. It is therefore important that the reserve is well landscaped and aesthetically pleasing.

Te Rangiita/Waitetoko Lakeside Reserve Management Plan 1993

7.4 WILDLIFE MANAGEMENT

Policy

To protect, where appropriate, and manage the wildlife and wildlife habitat of the reserve to an extent compatible with the reserves primary purpose.

Implementation

It is important that the desirable wildlife on the reserve is afforded some protection and that wildlife habitats are managed in a way to encourage indigenous wildlife to the area. Birds and other wildlife provide an attraction in reserves used for open space and recreational opportunities.

Native and exotic fauna normally found in the reserve will generally be protected subject to the requirements of any bylaws and regulations relating to noxious animals and vermin and to fishing rights.

Planting of berry and nectar producing plants shall be included in reserve planting plans where practical in order to encourage indigenous species of birds to the reserve.

Te Rangiita/Waitetoko Lakeside Reserve Management Plan 1993

8 Commercial Activities and Leases

O B J E C T I V E

To prohibit commercial activities, leases, licences and concessions on the Te Rangiita/Waitetoko Lakeside Reserve.



Te Rangiita/Waitetoko Lakeside Reserve Management Plan 1993

8.1 *COMMERCIAL ACTIVITIES, LEASES AND LICENCES*

Policy To prohibit commercial activities, leases, licences and concessions on the Te Rangiita/Waitetoko Lakeside Reserve.

Implementation Such applications and uses are not appropriate on this lakeside reserve and will therefore be declined.

Te Rangiita/Waitetoko Lakeside Reserve Management Plan 1993

9 Reserve Concept

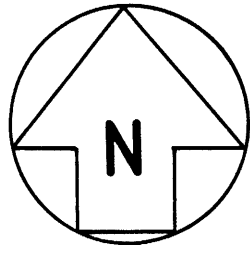
The concept for the reserve is to retain its open space character and to protect the environment and margins of Lake Taupo while providing an area for informal recreation and for social and community activities.

While there is no apparent need for major development to be done, the concept plan shows that some minor improvements of the reserve will be undertaken and barriers will be constructed in appropriate locations to restrict vehicle movement on the reserve.

10 Action Plan (also see Concept Plan)

- 1 A letdown will be provided in the kerb into the Ani Maria Place accessway and barriers will be constructed to restrict vehicle movement on the reserve and along the lake-edge.
- 2 Some beautification may take place through tree planting and landscaping.
- 3 To upgrade accessway to the reserve from Ani Miria Place - if demand necessitates such work.
- 4 To improve signage indicating locations of public accessways and provide interpretation signs on the reserve.
- 5 To investigate demand and options for providing toilet facilities to serve reserve users, and to provide public access to toilet facilities when demand is sufficient and when finances are available.
- 6 To provide picnic tables, seats and possibly barbeques on the reserve.

The majority of public submissions favoured strongly the retention of open space with no major development on the reserve.



SOME BEAUTIFICATION MAY TAKE PLACE ALONG THE LAKESHORE

POSSIBLE TOILET SITE

WAITETOKO ROAD

ANI MIRIA PLACE

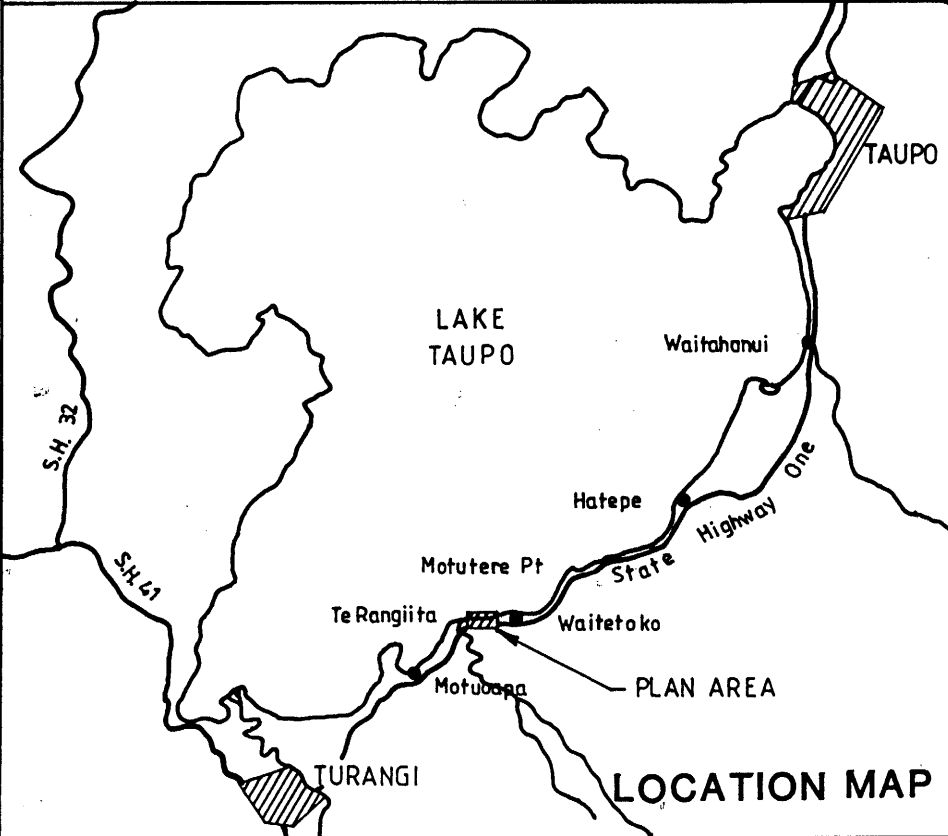
ONE

STATE

HIGHWAY

MAY BE NECESSARY TO UPGRADE DRIVEWAY

LET DOWN KERB TO GIVE EASY VEHICLE ACCESS



KEY

≧ BARRIERS TO BE ERECTED. ADDITIONAL BARRIERS MAY BE PROVIDED IF DEMAND REQUIRES.

**CONCEPT PLAN
TE RANGIITA/WAITETOKO
LAKESIDE RESERVE
MANAGEMENT PLAN
NOT TO SCALE**

Te Rangiitā/Waitetoko Lakeside Reserve Management Plan 1993

11 Plan Review

This Management Plan will be kept under continuous review as circumstances affecting the management of the reserve change. This is necessary to ensure its continued relevance to the management of the reserve. Minor adjustment can be made by publicly advertising changes during the planning period but major changes in policies and objectives would require a complete review. A complete plan review will generally be undertaken at five yearly intervals to ensure its continued relevance to management and public requirements.

12 Acknowledgements

The preparation of this Management Plan has been aided by a number of people. This assistance has been very valuable and is greatly appreciated. I would like to thank the following people for their contribution :

- * Paula Cherry for drawing the plans.

- * Wendy Cordell for typing the document.

- * The members of the public who sent in letters and submissions.