



## INTERSECTION SAFETY

Halt. Cease. Pause. STOP.

We all know what this means and Council has teamed up with Taupō Police to see how many drivers are adhering to the road rules at intersections.

The intersection of Titiraupenga Street and Tamamutu Street was one monitored, with over 20 vehicles stopped and warned in a 45 minute period this week. Had this not been a warning exercise, a \$150 fine and 20 demerit points would have been issued to each person.

Taupō Police constable Janice McCashin said the tally would have been higher as there were even more drivers failing to come to a full stop while the officers were issuing the warnings.

In an effort to improve road safety for all road users and pedestrians, road safety coordinator Diana Harrison pointed out that lack of stopping brings other issues to the fore.

"We noticed people not looking before turning too. With a school close by and children walking to school, we need to improve our awareness," she says.

"Stop and look both ways. It's just like crossing the road."

We all know \$150 doesn't get you as much as it used to. Let's slow down and stop at intersections and keep your hard-earned money in your pocket!

Above: Road safety co-ordinator Dianna Harrison and Taupō Police constable Janice McCashin at the intersection this week.



Over the coming weeks, we'll be profiling your elected councillors. This week is Taupō-Kaingaroa Ward Councillor Anna Park.



Anna Park is one of our longest serving elected members, but after three terms as a Taupō District Councillor her focus remains the same. "I wanted to get involved in local government because I felt someone had to represent families and the 30-50 year old demographic in our community, and that's still what I'm passionate about," she says. "Even though we have a much better balance around the council table now, we still have to do what's right for future generations, and that often means figuring out how to help those that don't have a strong voice themselves."

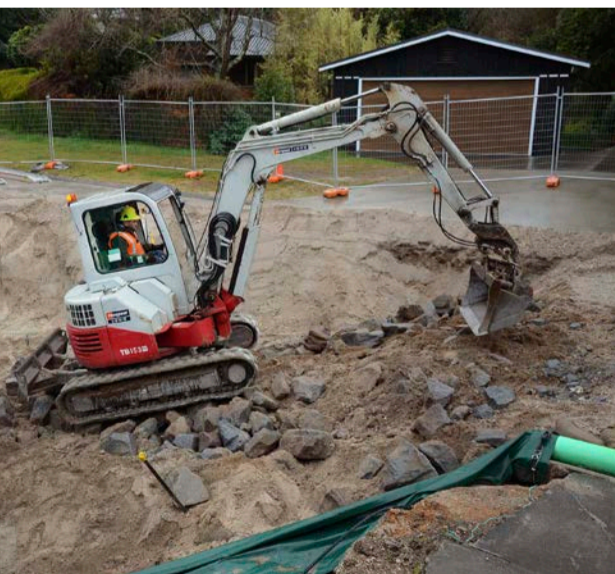
Councillor Park was our first sitting councillor to have a child while elected to serve her community. Her youngest daughter, who is now six, was a frequent attendee at Council meetings and workshops in the early days. Anna serves as chair of the Taupō District Emergency Management Committee and as Taupō's representative on the Waikato Regional Transport Committee and the Waikato Civil Defence Emergency Management Joint Committee. Anna also has youth, sports and recreation as her council portfolios. "What I like about local government is that it's all about connecting people, putting people in touch with what they need, but also looking at things from a long-term/big picture perspective."

Anna was no newcomer to politics when first elected, having worked in parliament for five years. While she enjoyed her time in Wellington, she was glad to return home to Taupō to raise a young family. "Our district is unique in so many ways but, for me, the greatest thing about it is the people. I really love representing the people of the Taupō District, from a grassroots level to a corporate level, and it's an honour to be able to do that."

### »» WHAT'S ON?

- Aug 24 Stella Awards Gala Dinner, Great Lake Centre
- Aug 31 Bikes are Back motorcycle event, Colonel Roberts Reserve
- Sep 1 Hoka One One Kinloch Offroad Challenge, Kinloch Domain

For more information visit [www.GreatLakeTaupo.com](http://www.GreatLakeTaupo.com)



## ARROWSMITH AVENUE SINKHOLE

Work at the Arrowsmith Avenue sinkhole site is progressing well, with the aim of reopening the road to traffic during early to mid-September.

Contractors have been busy putting rocks in place to reinstate the road, compacting the ground, laying out geotextile cloth and building a retaining wall. All this amounts to a huge effort to repair and protect the area from further damage.

Our parks and reserves team have also been involved with a renewal plan for the gully. Property owners are being included in these discussions.

The only expected impact on progress from here lies with the weather, with heavy rain forecast which may impact our work schedule.