

IRONMAN NEW ZEALAND IS NEARLY HERE!



ANOTHER EPIC IRONMAN event is set to hit our district next weekend, and we can't wait!

The Nutri-Grain IRONMAN incorporates a 3.8km swim, a 180km bike ride and a 42.2km run, and will kick off at dawn on the Taupō lakefront on Saturday, March 6.

Hundreds of local volunteers will be helping out on the day and thousands of supporters and spectators will be flooding into our district to enjoy the event. We are excited!

It's important to remember in the lead up to the event, there will be a lot of cyclists out training on the roads around our district. Please keep an eye out for them and give them a wide berth.

Road safety coordinator Sarah Wraight said the cyclists were getting plenty of kilometres in ahead of the event.

"I'd encourage all motorists to keep a watchful eye on cyclists and drive slowly and carefully around them in the lead up to – and during – this event," she said.

"We want to keep everyone safe and for drivers to keep a safe distance from all cyclists."

Please note, there will be road closures on the day of IRONMAN – find out more at taupo.govt.nz/roadclosures.

IRONKIDZ ROAD CLOSURES THIS WEEKEND

This weekend the Ironkidz event will see hundreds of children show grit and determination on the Taupō lakefront.

Lake Terrace will be closed between Tongariro Street and Mere Road from 6.30am to 2pm on Sunday, February 28. Tongariro Street will also be closed between Lake Terrace and Heuheu Street for the same time period.

Please be aware of these closures and take a different route to your destination if it would normally involve these roads.

KINLOCH WASTEWATER TREATMENT PLANT UPGRADE UNDERWAY



THE KINLOCH WASTEWATER treatment plant is getting a significant upgrade to increase its capacity to treat wastewater and accommodate ongoing and future growth in Kinloch.

Infrastructure manager Denis Lewis said the \$15.5 million upgrade began this week and would improve the level of reliability and resilience of the plant.

"There will be some minor disruption to the households directly surrounding the plant and we have communicated with these residents directly. Thank you for your patience and understanding while we upgrade this treatment plant and future-proof it for the Kinloch community."

The project is being undertaken by Spartan Construction on behalf of council and is expected to be completed by March 2022.



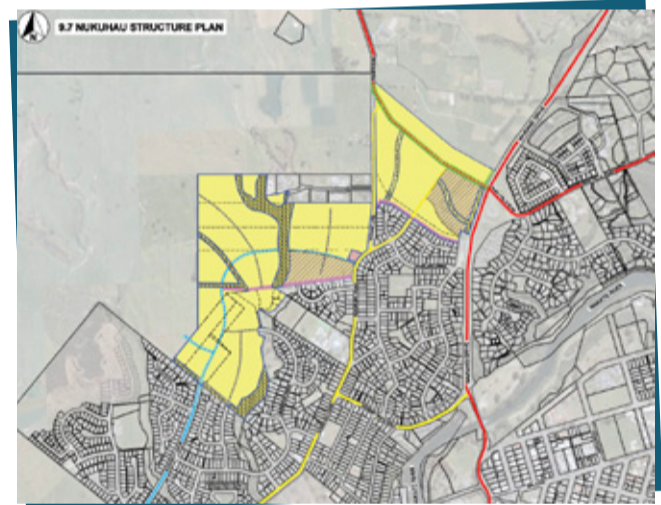
PIHANGA PLAYGROUND OPEN FOR PLAY!

THE UPGRADE TO the Pihanga Reserve playground was finished last week with four new pieces of play equipment installed for the community to enjoy.

Stepping logs, a zig zag walk, a rope bridge and a climbing net now complement the existing playground equipment. A synthetic safety surfacing was also installed under the existing playground and new climbing net area. Some minor landscaping work will be completed over the next few weeks.

Thanks to everyone for your patience while we closed the area to safely install everything. It's now open, so gather your friends and whanau and check it out.

TIME IS RUNNING OUT TO HAVE YOUR SAY ON NUKUHAU REZONE REQUEST



PROPOSED MEDIUM DENSITY RESIDENTIAL ZONE

PROPOSED GENERAL RESIDENTIAL ZONE

THERE'S JUST ONE week left to have your say on the private plan change request to rezone an area of Nukuhau. Submissions are open until 5pm March 5, 2021.

The private plan change request seeks to rezone 77.78 hectares of land from rural environment to a mix of general and medium density residential, as well as a shopping centre and areas for stormwater and recreation reserves.

The request has been proposed by cooperating landowners and would enable the future development of about 780 dwellings in an area identified as a growth area in the Taupō District 2050 Growth Management Strategy.

Following this public notification period, a hearing will be held to consider the submissions. A decision will be made whether to approve or decline the proposed plan change.

The plan change, including detailed maps of the area, is available for viewing at all our customer services centres and libraries, as well as online at taupo.govt.nz/nukuhauplanchange.

COMMUNITY AMBASSADORS PROVING POPULAR

TAUPŌ'S VOLUNTARY COMMUNITY ambassadors are proving popular with visitors and locals alike.

The six ambassadors cover the lakefront and central business district, answering questions and giving directions to visitors to the district as well as quite a few locals.

Strategic partnership advisor Veronica King says the community ambassadors, who are all volunteers, have been out and about since the middle of January and feedback on their work has been unanimously positive.

"The ambassadors offer a warm, welcoming face to visitors to the district and are there to help locals too, for example by helping to educate people about the shared use etiquette on the new Great Lake Pathway," she said.

"They are all very knowledgeable about the district and have been really well received. They are also a great source of feedback for us about what visitors here are doing and



what they'd like to see in the future, and about what locals may be concerned about."

The community ambassadors will be on duty till the end of March, so when you see them out and about don't hesitate to say hello.

