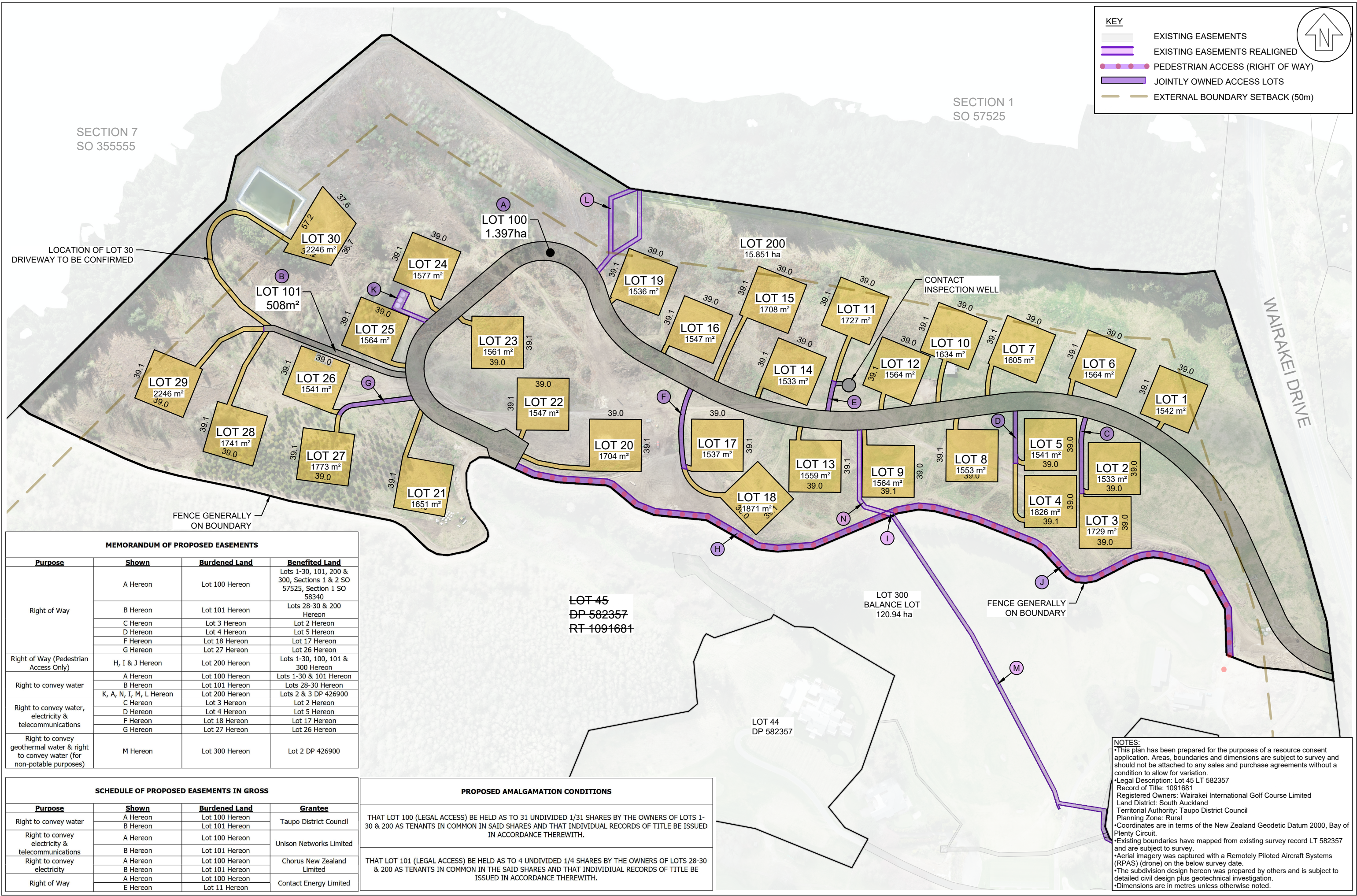


COPYRIGHT AND INTELLECTUAL PROPERTY RIGHTS OF THE INFORMATION SHOWN ON THIS PLAN REMAIN THE PROPERTY OF KOTARE CONSULTANTS LTD. IT MAY NOT BE REPRODUCED WITHOUT THE PRIOR CONSENT OF KOTARE CONSULTANTS LTD. AREAS AND DIMENSIONS SHOWN ARE SUBJECT TO FINAL SURVEY.



MEMORANDUM OF PROPOSED EASEMENTS			
Purpose	Shown	Burdened Land	Benefited Land
Right of Way	A Hereon	Lot 100 Hereon	Lots 1-30, 101, 200 & 300, Sections 1 & 2 SO 57525, Section 1 SO 58340
	B Hereon	Lot 101 Hereon	Lots 28-30 & 200 Hereon
	C Hereon	Lot 3 Hereon	Lot 2 Hereon
	D Hereon	Lot 4 Hereon	Lot 5 Hereon
	F Hereon	Lot 18 Hereon	Lot 17 Hereon
Right of Way (Pedestrian Access Only)	H, I & J Hereon	Lot 200 Hereon	Lots 1-30, 100, 101 & 300 Hereon
	A Hereon	Lot 100 Hereon	Lots 1-30 & 101 Hereon
Right to convey water	B Hereon	Lot 101 Hereon	Lots 28-30 Hereon
	K, A, N, I, M, L Hereon	Lot 200 Hereon	Lots 2 & 3 DP 426900
Right to convey water, electricity & telecommunications	C Hereon	Lot 3 Hereon	Lot 2 Hereon
	D Hereon	Lot 4 Hereon	Lot 5 Hereon
	F Hereon	Lot 18 Hereon	Lot 17 Hereon
	G Hereon	Lot 27 Hereon	Lot 26 Hereon
Right to convey geothermal water & right to convey water (for non-potable purposes)	M Hereon	Lot 300 Hereon	Lot 2 DP 426900

SCHEDULE OF PROPOSED EASEMENTS IN GROSS			
Purpose	Shown	Burdened Land	Grantee
Right to convey water	A Hereon	Lot 100 Hereon	Taupo District Council
	B Hereon	Lot 101 Hereon	
Right to convey electricity & telecommunications	A Hereon	Lot 100 Hereon	Unison Networks Limited
	B Hereon	Lot 101 Hereon	
Right to convey electricity	A Hereon	Lot 100 Hereon	Chorus New Zealand Limited
	B Hereon	Lot 101 Hereon	
Right of Way	A Hereon	Lot 100 Hereon	Contact Energy Limited
	E Hereon	Lot 11 Hereon	

**PROPOSED AMALGAMATION CONDITIONS**

THAT LOT 100 (LEGAL ACCESS) BE HELD AS TO 31 UNDIVIDED 1/31 SHARES BY THE OWNERS OF LOTS 1-30 & 200 AS TENANTS IN COMMON IN SAID SHARES AND THAT INDIVIDUAL RECORDS OF TITLE BE ISSUED IN ACCORDANCE THEREWITH.

THAT LOT 101 (LEGAL ACCESS) BE HELD AS TO 4 UNDIVIDED 1/4 SHARES BY THE OWNERS OF LOTS 28-30 & 200 AS TENANTS IN COMMON IN THE SAID SHARES AND THAT INDIVIDUAL RECORDS OF TITLE BE ISSUED IN ACCORDANCE THEREWITH.

**NOTES:**

- This plan has been prepared for the purposes of a resource consent application. Areas, boundaries and dimensions are subject to survey and should not be attached to any sales and purchase agreements without a condition to allow for variation.
- Legal Description: Lot 45 LT 582357
- Record of Title: 1091681
- Registered Owners: Wairakei International Golf Course Limited
- Land District: South Auckland
- Territorial Authority: Taupo District Council
- Planning Zone: Rural
- Coordinates are in terms of the New Zealand Geodetic Datum 2000, Bay of Plenty Circuit.
- Existing boundaries have mapped from existing survey record LT 582357 and are subject to survey.
- Aerial imagery was captured with a Remotely Piloted Aircraft Systems (RPAS) (drone) on the below survey date.
- The subdivision design hereon was prepared by others and is subject to detailed civil design plus geotechnical investigation.
- Dimensions are in metres unless otherwise noted.

NZGD 2000: BAY OF PLENTY CIRCUIT - DATUM  
 - : CONTOUR INTERVAL - : DATUM  
 - : GEODETIC CODE - : ORIGIN MARK  
 - : - : COORDINATE NOTES (LV1A)

CLIENT TW PROPERTY  
 PROJECT WAIRAKEI INTL. GOLF COURSE 1/527 WAIRAKEI DRIVE, TAUPO

PLAN SCHEME PLAN - ENLARGEMENT  
 LOTS 1-30, 100, 101, 200 & 300 BEING A PROPOSED SUBDIVISION OF LOT 45 DP 582357

BY: TM APR: SCALE: 1:2500 | DATE 04.09.2023  
 CHK: JRT  
 STATUS: FOR CONSENT  
 CHANGELOG: REFER TO DRAWING REGISTER  
 PLAN 1102.SC.00.092 | REV A

C:\1205\DATA\KOTARE\1102 - WAIRAKEI INTERNATIONAL GOLF COURSE LIMITED\_3501 CAD\1102-00-SC-092 - SCHEME ENLARGE.DWG | 2023-09-04 11:15:58