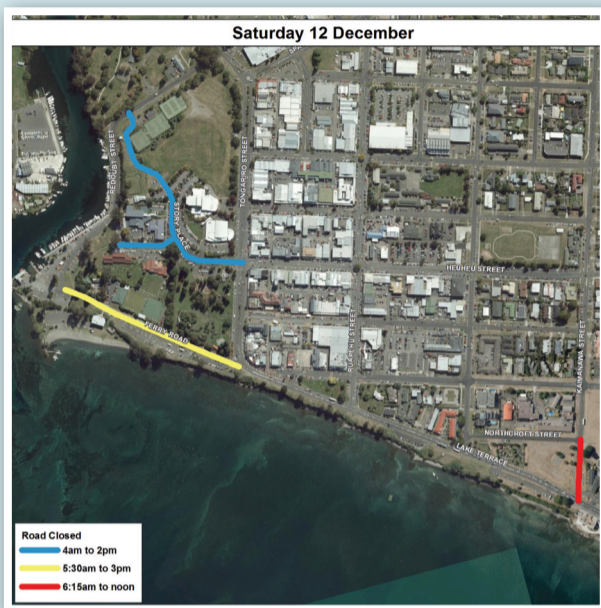




IRONMAN 70.3 has arrived



Are you ready for the inaugural Kellogg's Nutri-Grain IRONMAN New Zealand 70.3 tomorrow?

We are excited to be hosting the only New Zealand competition that offers triathletes a shot at securing a spot in the IRONMAN 70.3 World Championship in Queensland, Australia for 2016.

The Taupō Half triathlon was rebranded as IRONMAN 70.3 for this year's event. We are looking forward to witnessing history unfold with 1400 athletes taking part, with about a quarter of those from overseas.

The event comprises a 1.9km swim followed by a 90km bike and a 21.1km run to the finish.

There will be some road closures to allow for the event to take place. Along with the roads shown on the map, Broadlands Road from the landfill access road to the district boundary will also be closed from 6.30am to noon.

The roads will still be accessible in an emergency, but for regular use, these roads need to be avoided.

The bus bays normally located on Tongariro Street will be relocated to the northern end of Ruapehu Street by Gascoigne Reserve from 5am to 5pm tomorrow.

Get down there and support these amazing athletes as they take on the challenge!

Community gardens

An organisation that does a lot of good work in our district but a lot of Taupō residents might not have heard about is the Taupō Community Gardens.



I recently visited the gardens to meet the good people who run the operation, and left with my heart swelling with pride for our community and the support it gives to those in need.

The gardens were created in 2009 out near the Waipahihi sportsgrounds, where they remain today.

Launched by a group of enthusiastic gardeners, generous helpers and fantastic sponsors, they have grown into a thriving organisation.

A bare patch of land has been transformed into a productive garden, teaching facility and fruit orchard that now supplies large amounts of organically grown fruit and vegetables to Taupō Food Bank.

It's amazing that this group of people came together to make a real tangible difference in people's lives and are doing so successfully six years later.

Not only this, they also work to foster interest in organic gardening, self-sufficiency, community resilience and sustainable living. It's a place people can go to learn about composting and waste minimisation and they have exciting plans for the future.

The civic spirit demonstrated by the Taupō Community Gardens is the kind of thing that makes our district a great place to live. Speaking of which, it was fantastic to see the community getting behind the local fundraising effort with the Zero Risk King of the Ring last weekend. The event raised an amazing \$410,000 for charity. Congratulations to all those involved.

In the meantime, we have one of the biggest events on our calendar here in town this weekend – the Kellogg's Nutri-Grain IRONMAN 70.3. I'd like to give a big welcome to all the competitors, supporters, volunteers, coaches and organisers of this fantastic event. I hope you enjoy your stay in the Taupō District and leave it all out there on the course. We'll be out there supporting you every step of the way and wish you all the best.

Mayor David Trewavas • dtrewavas@taupo.govt.nz • 07 376 0899

New sculpture proving popular

Have you been down to see our newest sculpture on the lakefront yet?

Defining Horizons has been capturing the attention of residents and visitors since it was installed last month.

The sculpture is made from a combination of stainless, corten and mild steels and symbolise journeys of discovery and New Zealand.

Its artist, Graham Bennett, says he wants viewers to make their own interpretations of the sculpture, but for him it was many overlapping ideas.

"I was thinking of Polynesian migration, Cook's voyage of discovery, and families' ancestral journeys, but it could be interpreted as any form of wayfinding," he said.

The top components of the work that point in different directions symbolise the longitudinal divisions of the globe that divide the Pacific Ocean, and the latitudinal divisions inspired the ribs which give it a nautical feel.

It was donated by the late Graeme Watson, ex-deputy chair of the Taupō Sculpture Trust and jointly commissioned by the trust and council.



Share with care and keep left

Have you seen the new, widened path along the lakefront? There's plenty of room for cyclists, pedestrians, buggies, wheelchairs and more.

Our contractors are still working on parts of the path but it should be finished before Christmas.

It's important to be courteous along this shared path and beyond – it stretches all the way to Five Mile Bay and has varying widths along the way.

Keep left and be considerate of other path users. Cyclists must give way to pedestrians so, if you're on your bike, slow down and give pedestrians plenty of room. We encourage cyclists to let pedestrians know they're approaching or ring their bell. Pedestrians have responsibilities too – they need to keep left so cyclists can go around.

We have signs up to remind people of their responsibilities on the track, so there's no confusion. The path is for everyone to use so share with care and get out there and enjoy it together.



Health applications now online

If you run a premise the needs to be registered with us under the Health Regulations, life is about to get easier!

We have just launched an online registration service on our website to make the process simpler, faster and available 24/7.

The premises that need to register with us under the regulations include food premises, mortuaries, offensive trades (rubbish and septic tank collection), hairdressers, camping grounds and stock saleyards.

For some of these operators, it's not always easy to get to the council office between 9am and 5pm on a weekday, so the online service will be useful.

The introduction of the service is part of our ongoing commitment to provide more accessible services.

It's adding to our online tools that already include online Land Information Memorandums, building consents, resource consents and dog registration. Our online portal keeps all your information with us in one place for ease of access and visibility.

The next step for our online portal will be getting liquor applications, which we plan to look into early next year.

Email your elected members at councillors@taupo.govt.nz

For more information call 07 376 0899 or go to www.taupo.govt.nz

What's on

- 11 Dec** Richmond Heights Healthy Living, Waipahihi Sportsground, Taupō
- 11 Dec** Carols in the Park, Tongariro North Domain, Taupō
- 12 Dec** Ironman 70.3, Taupō
- 12 Dec** Turangi Christmas in the Park and 50th Jubilee celebrations, Tongariro School sportsgrounds, Turangi
- 12 Dec** 'Some Enchanted Evening at the Ora Garden', Taupō Museum

✳ For more information on Taupō District events visit www.GreatLakeTaupo.com



Mayor David Trewavas, Dep Mayor Barry Hickling, Cr John Boddy, Cr Bernhard Chrustowski, Cr Rosie Harvey, Cr Rosanne Jollands, Cr Anna Park, Cr John Williamson, Cr Zane Cozens, Cr Maggie Stewart, Cr Kirsty Trueman