

HAVE YOUR SAY ON FREEDOM CAMPING

LOOKING AFTER THE PLACE
we love



What do you think about freedom camping? We want you to have your say before a working party starts investigating the potential for a freedom camping bylaw for the Taupō District.

The Council decided at its May meeting to set up a working party to investigate ways to manage growing numbers of freedom campers visiting the district. But first, it wants to gain an understanding about how the community feels about the activity.

Policy manager Nick Carroll said there had been a lot of negative media coverage about freedom camping over summer and this prompted concerns about whether the Council was adequately dealing with the issue.

"Everyone's experience is likely to be different and it's important

to gather information on what the nature and scale of the issues may be before we go any further," he said.

People are being invited to have their say from Monday by answering a survey on our website www.taupo.govt.nz or emailing freedomcamping@taupo.govt.nz. Once the opportunity to give feedback closes at 5pm on July 1, the information will be collated for consideration by the working party at its first meeting in early July.

Members of the working party will include councillors and representatives from government agencies such as the Department of Conservation and Internal Affairs, tourism operators, holiday park owners, iwi, the New Zealand Motor Caravan Association and others.

BRIGHTENING UP OUR LIBRARY

Taupō Library is being given a facelift!

Our contractors have been hard at work and it's starting to look great. The painters are rejuvenating the inside of the building, working their around library visitors and staff as they go.

Some areas are being closed temporarily to make sure our books and visitors stay safe and clean, and away from wet paint!

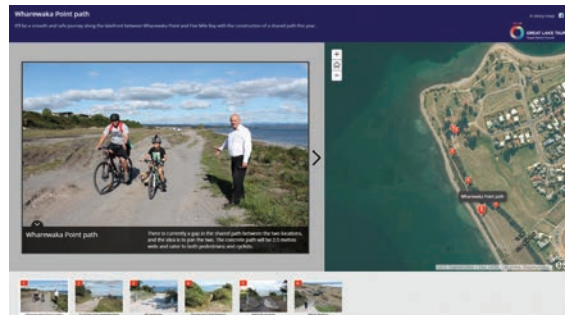
We are trying to minimise any disruption, so much of the work is being done after hours. At the moment they're working in the adult fiction section. If you can't find or access the book you're looking for during this time, talk to the library team and they may be able to help you out!

We have a whiteboard up in the library that is updated as the painting progresses, so you can see what areas are affected or may be temporarily closed. We expect to have it all finished by mid-August.

Pictured: Taupō Library staff Moira Pereira and Kev Collins.



WHAREWAKA WALKWAY EXTENSION IN PICTURES



If you've been wondering what's been going on at Wharewaka, check out the new storymap on our website about the walkway extension.

Storymaps are a tool we use to keep the community updated on what's happening with some of our projects. It uses pictures and a map to show you what's going on – and where!

The Wharewaka walkway extension project will see the construction of a path between Wharewaka Point and Five Mile Bay to close the gap in the shared path.

The concrete path will be 2.5 metres wide and cater to both pedestrians and cyclists. The area that is currently gravel will be sealed and turned into a road and car park, and the concrete path will run alongside it. A low timber barrier installed to separate vehicles and pedestrians to make it safer.

It is hoped connecting the two paths will improve access for cyclists and pedestrians who travel between the two.

To allow further preparation work to take place, the vehicle access to the lakefront at Wharewaka Point is currently closed, and it will not reopen until the work is completed. Pedestrians and cyclists are still able to access the area.

The work will be expected to be completed in time for summer.

Keep updated on what's happening at Wharewaka with our storymap over the next few months at www.taupo.govt.nz.

REID'S FARM CLOSING TO CAMPING

Reid's Farm will close to campers for the winter season from Monday until October 1.

The closure is to allow some remedial works to be undertaken and is consistent with its current management plan.

There have been no closures over recent years but as the site was under increased pressure from freedom campers over summer, some maintenance work is now required.

People will still be able to access the reserve during the day but no overnight camping will be allowed.

A comprehensive review of the Reid's Farm Reserve Management Plan will be undertaken to reflect changing uses of the area.

Initial feedback will be sought from the community at the start of the process with another opportunity for people to give feedback once a draft has been prepared.

**Vote.
2016.**

LOCAL ELECTIONS

CANDIDATES SESSIONS FOR BUDDING POLITICIANS

Budding local government candidates can find out more about standing for Taupō District Council or Waikato Regional Council at a series of information sessions next week.

Deputy Electoral Officer Tina Jakes says the sessions will give anyone thinking about standing, for the mayoralty or councillor and community board roles in October's local elections, all the information they need.

Information will be provided on what people need to do in order

to become a candidate as well as what they can expect if they are successful at the election.

"We will cover how candidates can be nominated, discuss the time commitments needed, as well as duties and legal obligations for these roles," she said.

The information sessions will be held on Monday, June 20 at 1pm at the Mangakino Service Centre and at 7pm at the Turangi Service Centre. On Tuesday, June 21, sessions will be held in the Council Chamber at our Lake Terrace office at 1pm and 7pm.

What's on?

18 June Michaela's Storytime for children and caregivers, Taupō Library (Also on 25 Jun, 2 Jul, 9 Jul)

Until July 25 Tamariki Toi - Children's Matariki art exhibition, Taupō Museum

Until July 25 Ka U ki Matanuku exhibition, Taupō Museum

For more information on Taupō District events visit www.GreatLakeTaupo.com

Email your elected members at councillors@taupo.govt.nz

For more information call 07 376 0899 or go to www.taupo.govt.nz

