



## POPULAR WHAREWAKA FOOTPATH OPENED

The new footpath linking Wharewaka and Rainbow Point is now complete and an opening ceremony was held last Friday.

Mayor David Trewavas welcomed residents and staff from Summerset Retirement Village and the New Zealand Transport Agency before cutting the ribbon to officially declare the path open.

Previously, the uneven ground had proved to be a challenge for residents, whether walking or using mobility assistance.

Amanda Johnston, activities co-ordinator for

Summerset by the Lake, outlined the importance of the path for residents who no longer drive.

"Summerset residents are elated with the new Wharewaka footpath that now links the Village to the nearby Rainbow point shops. This now makes access easy for all ranges of mobility."

Mayor David Trewavas said the path was instigated following a submission from the residents and team from Summerset by the Lake.

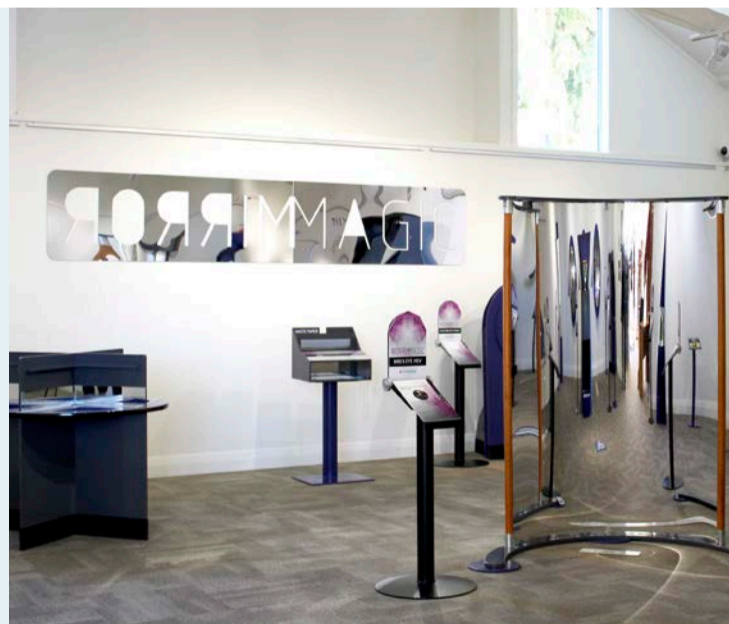
"This is a great example of what can be achieved when the council community come together for the greater good."

## MIRROR MAGIC

Looking for something to reflect on? Taupō Museum is bringing you a new fully interactive, entertaining and revealing exhibition called Mirror Magic.

This exhibition uses mirrors to explore the science of reflections and reflected light. This is a great one to bring children to with lots of hands-on experiences to investigate and in-depth science explanations for the phenomena being observed, or you can take photos of you all stretched out of shape!

The exhibition comes to us via Te Manawa Museum in Palmerston North and has proven to be popular with families and enjoyed by both adults and children alike. It also attracts schools, and is relevant for the topic 'Making sense of the physical world' which is included in the current science curriculum for young learners.



## PLASTIC FREE JULY GATHERING MOMENTUM

Wondering what you can do during Plastic Free July? Want to make a difference in cutting down plastic in our environment?

You can always join the team this Saturday for a fun, interactive workshop where you can make your own reusable cloth bag to take home.

Most plastic single-use bags are used for an average of 12 minutes, but could take 100 years to break down.

Research suggests Kiwis used an estimated total of 1.29 billion bags per year. That's more than six per week for every adult in New Zealand.

"The last thing we want is plastic bags getting into our lakes and waterways. We've already had local businesses stop supplying plastic bags which is great and we're looking forward to more following suit. Boomerang bags and reusable bags are a great alternative," says Stormwater and solid waste manager Brent Aitken.

Boomerang Bags are made from donated material and no experience is required, so come along and show us your creative side during Plastic Free July and say no to plastic!



**BOOMERANG BAGS SEWING WORKSHOP**  
Taupō Rotary Club  
Saturday July 7  
1pm-4pm

## » WHAT'S ON?

- Jul 7 Boomerang bags sewing workshop, Taupō Rotary Club
- Jul 9-20 Holiday programme, Taupō Library and Museum, Turangi Library
- Jul 11 Plastic Free giveaways, Town Centre stage, Turangi
- Jul 11-15 Taupō Winter Festival, various locations
- Jul 12 Plastic-free giveaways, Mangakino Library
- Until Aug 5 Mirror Magic, Taupō Museum

For more information on Taupō Winter Festival, go to [taupowinterfestival.co.nz](http://taupowinterfestival.co.nz)