



GREAT LAKE PATHWAY ROCKS!



A POPULAR AREA of the Great Lake Pathway is taking on a new look with some massive rocks taking centre stage.

These kohatu or rocks off Mount Tauhara are being installed at the entrance ways to the Waipāhihi C75 foreshore reservation, as part of a partnership with the trustees of Waipāhihi Marae.

Landscape architect Fraser Scott said the new additions were a huge undertaking – in more ways than one!
“The rocks were craned in this week and compliment

the new plantings. It took an effort to get them in, but it’s worth it. It all looks fantastic,” he said.

“We are fortunate to have the use of the land. The Marae trustees and Tuwharetoa designer, Kingi Pitiroi have done some great work to recognise the people and places attached to these significant lands.”

Today (Thursday), the Great Lake Pathway will be officially opened by the Rt Hon Jacinda Ardern. Check out our Facebook page for updates!



SEWER MAINTENANCE AND ASSESSMENT BEGINS IN TAUPŌ INDUSTRIAL AREA

A PROGRAMME OF sewer cleaning and assessments is now underway in the industrial area of Taupō.

Infrastructure manager Denis Lewis said the programme of work involves cleaning pipes and identifying any necessary repairs to the network.

“This work is being carried out by our contractor Interflow around the industrial area of Miro, Matuku and Matai Streets, as well some residential areas around Elizabeth Street,” he said.

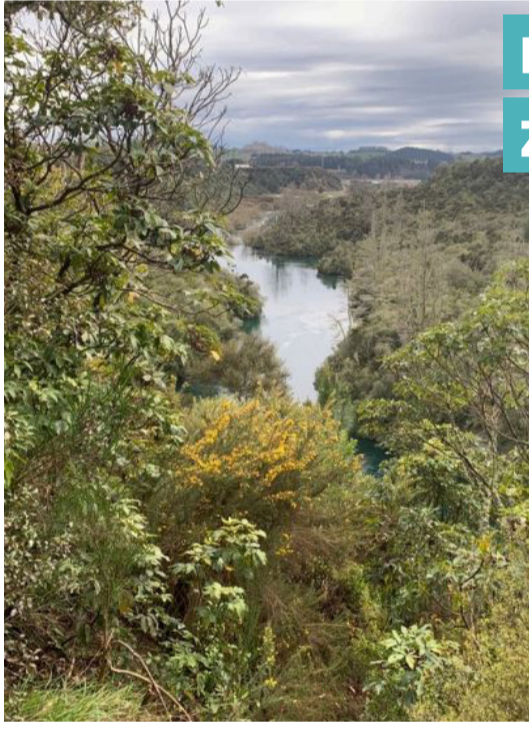
The pipework identified by the condition assessment will then be relined by Interflow to improve their resilience and longevity.

“This is part of the work programme we have planned under the recent government funding received for infrastructure upgrades throughout the district, and there will be similar cleaning and assessment work getting underway in Turangi in the coming weeks.

“This is a very comprehensive and thorough way of assessing the condition of the network, and makes for a very cost-effective method of making the system more resilient.”

The Taupō section of the programme should be completed before Christmas, and the community are asked to use caution around any work sites.

PANEL TO CONSIDER ZIPLINE PROPOSAL



A PANEL OF independent commissioners has been appointed to make a decision on a zipline proposed for a section of the Waikato River between Huka Falls and the East Taupo Arterial.

The proposal, made by Sky Play Adventures Limited in partnership with the Tauhara North No. 2 trust, is for five ziplines with eight launch/landing towers, new walking tracks and ecological restoration. The application site includes land on both sides of the Waikato River (east of Karetoto Road) with the five ziplines running over the Waikato River at varying elevations.

Head of regulatory and risk Brian Fox said the proposal was publicly notified in February and received 53 submissions supporting it, three neutral and nine opposing.

“Under the Resource Management Act, Publicly Notified Resource Consents may be heard by either councillors or independent commissioners with accreditation in the Making Good Decisions (RMA) programme,” he said.

“There are currently no councillors accredited in this way and therefore in the 25 August meeting of council it was decided to appoint a hearings panel made up of Gina Sweetman (Chairperson), Kim Hardy, and Brad Coombs to consider the proposal and make a decision on it.”

The hearing will be held from Wednesday, 30 September to Thursday, 1 October and is open to the public.

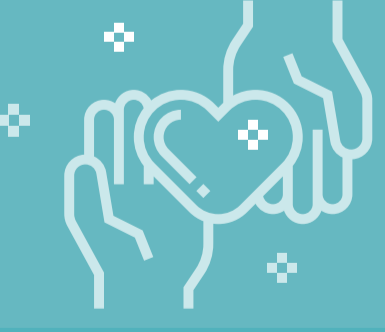
APPLY FOR A COMMUNITY GRANT NOW!

APPLY NOW! APPLICATIONS for funding are now open for four community grants aimed at supporting individuals and groups across the Taupō District.

The Social Services, Mangakino/Pouakani and Turangi/Tongariro Community Grants provide a great opportunity for locals to create positive community outcomes across different sectors. Projects and activities may vary between one off events to capital projects.

In addition, the Community Sports Grant is open for applications and allocates funds to support sporting activities and approved projects.

For more info and to make an application go to: www.taupodc.govt.nz/grants.



TAUPO TOWN CENTRE TRANSFORMATION UPDATE

IT’S BEEN A busy couple of weeks onsite at the Tuwharetoa Street and Ruapehu Street intersection, with preparatory works for the new kerbing and channeling completed and the concrete poured. Cables and ducting have also been completed, and there has been some tidying up around the drains too.

This week, the team have been busy with work getting underway on the paved areas, the pedestrian crossings and the pouring of concrete bases for the street furniture. And last but not least, our contractor have been at the Tauhara quarry site picking out some local rocks to feature in the landscape design.