

## INNOVATIVE TECHNOLOGY IMPLEMENTED IN ETA PROJECT

**IT'S ALL HANDS on deck, with the ETA shared path project in full swing.**

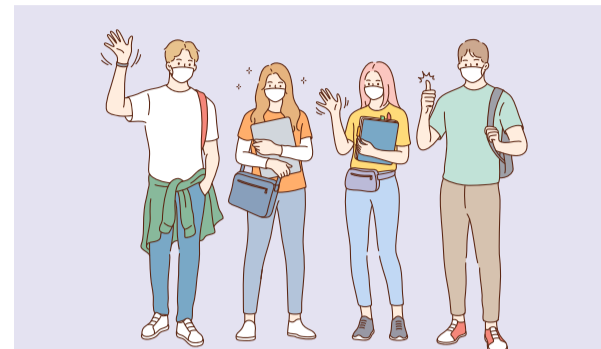
Local contractors May Concrete Placers have been laying down the path with the weather staying fine allowing for a decent pour this week. A motorised adjustable screed behind the truck is proving to be a fantastic tool to vibrate the concrete giving the 2.8m wide shared path a top-quality finish.

The screed has adjustable arms which are set to the width of the path, smoothing the surface as the concrete gets poured. Set up behind a concrete truck it saves a lot of time and effort in perfecting the surface by hand.

Infrastructure Project Manager Ben Schubert is happy with the progress to date. "Following lockdown and bad weather it's great to see our team of local contractors roll their sleeves up and get stuck in," he said. "We're looking forward to having a pathway for everyone to enjoy once its completed."



## SUMMER STUDENTSHIPS



**CALLING ALL STUDENTS** who are looking for a new challenge this summer! We are looking for high school and tertiary students who call the Taupō District home to fill some job vacancies for us over summer!

We have student jobs in lots of areas including customer support, horticulture, information management, our libraries and museum and our sportsgrounds. These roles provide a fantastic opportunity to work with a passionate group of people while gaining valuable experience in a field you are interested in.

Applications for these jobs close on Friday 29 October - so get your CV in quick - apply at [taupo.govt.nz/careers](http://taupo.govt.nz/careers)

## MANGAKINO/POUAKANI COMMUNITY GRANTS

**THE MANGAKINO/POUAKANI community representative group has approved six council grants worth \$12,500 to benefit the local community at its latest meeting.**

The Mangakino holiday activities programme received \$4000, the Mangakino Rugby League Club \$3500 to fit out the new Mangakino Sports Hub Building with tables and chairs, while Marotiri School was granted \$1000 for Kapa Haka Uniforms. The Rangiamokura Te Kohanga Reo 30th Birthday celebrations are being supported by \$1500 and the Community Summer Sizzler event will benefit by \$2000, and next year's Wake NZ North Island Championships are being supported with \$500.



**GILLIAN CRONIN**  
Taupō Museum | October 30

**PICK or treat**  
**HALLOWEEN LITTER PICK UP**  
**SUNDAY 31 OCTOBER**  
**10AM - 12PM**  
**FLOAT PLANE CARPARK, REDOUBT ST**

## KINLOCH WATER TREATMENT SET TO IMPROVE



**DESIGN WORK FOR a new water treatment plant for Kinloch is nearly complete and construction of the plant is expected to get underway next year.**

Asset manager water Tom Swindells says council is currently evaluating tenders for the construction of the plant, which is to be located at 231 Kinloch Road, and it is expected the successful tender will be chosen soon. "This is a fairly sizeable project, with a budget of \$9.5 million," Mr Swindells said, "so there is a considerable amount of work to be done before we break ground."

"With Kinloch's population growing, it is important that we manage the water supply and also future proof the infrastructure. The water treatment plant, together with the wastewater treatment plant which is now nearing completion, will go a long way to ensuring we have a really resilient system for Kinloch."

Work to increase capacity at the Kinloch wastewater treatment plant has also been progressing well. The \$15.5 million upgrade will not only increase the plant's capacity to treat wastewater but will accommodate ongoing and future growth in Kinloch.

## STATE HIGHWAY ROAD REPAIRING AND RESEALING

**STATE HIGHWAYS IN the Taupō area will be repaired and resealed during coming months, as the Waka Kotahi New Zealand Transport Agency spring/summer road maintenance programme gets underway locally from this week.**

Work has begun to replace the road surface on State Highway 5 between Rotorua and Taupō at Dicks Hill and on State Highway 32 at Whakamaru. Both sites will have Stop/Go traffic management and a 30km/h temporary speed limit in place.

Motorists can also expect road works on SH1 at Korohe, between Taupō and Turangi, from late-October.

The above works are expected to be completed by mid-November, subject to weather and any other unexpected delays.

New asphalt will be laid at several sites including SH5 Napier-Taupō, working north, and intersections such as SH1/State Highway 30 at Atiamuri and the SH1 Wairakei roundabout.

Road users are encouraged to check the Waka Kotahi Journey Planner website for up-to-date information on a variety of roadworks, traffic, delays, road closures and detour routes. Head to [journeys.nzta.govt.nz](http://journeys.nzta.govt.nz) for more information.

