

TAUPŌ'S NEWEST TRAFFIC LIGHTS PROJECT WRAPS UP



IT'S A BIG thank you to everyone involved in the new lights at the te Heuheu/Tītiraupenga Street intersection.

The project is now virtually complete, with just a few minor finishing touches to be done.

The team from our contractor Downer, as well as designers WSP Opus, were on hand recently to share a well-earned cuppa and celebrate the work coming to a close, and project manager Izelda Cruz said with this work site effectively being closed off it was now all hands on deck for the final phase at the top of Tītiraupenga Street.

"Thank you to our contractors for some really great work," Ms Cruz said, "and special thanks to the surrounding businesses for bearing with us during this process. The intersection is now operating really well and is proving a lot safer for drivers, cyclists and pedestrians alike.

"Now we will be kicking off the resealing of Tītiraupenga Street between Scannell Street and Spa Road, with some road closures in place, so please drive safely everyone, we're nearly done for the year!"

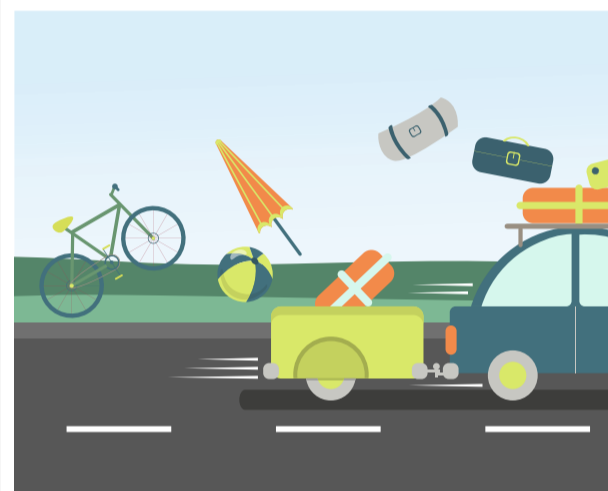
COVERING YOUR LOAD MEANS LESS LITTER

THE HOLIDAY PERIOD can often mean more waste and more trips to the landfill.

Please tie down any loads securely or use a tie-down net. Anything falling off vehicles and debris on the road is a hazard to other users and has a negative impact on the environment.

Tips to secure your load:

- only carry loads that suit your vehicle's loading space or deck.
- cover loose, bulk or fragile loads so that they can't fall or be blown off.
- cargo might shift in transit, so keep an eye on the load and test the restraints after a few kilometres.
- cover garden waste with a tarpaulin or netting and secure it to the sides, so nothing can fly out.
- transport loose, smaller items in restrained boxes. Larger items, such as shovels, rakes or pipes should be tied to the trailer.



VACCINE REQUIREMENTS AT COUNCIL FACILITIES AND VENUES

TAUPŌ DISTRICT COUNCIL will introduce vaccine requirements at most of its facilities and venues from Wednesday 15 December.

All users aged 12 years and over will be required to use the My Vaccine Pass to enter.

Facilities that will require My Vaccine Pass from 15 December include all swimming pools, libraries, Taupō Museum, Great Lake Centre, Taupō Events Centre, Owen Delany Park stadium and the number one pitch, Superloo and council offices with public access.

To ensure the community has access to democratic and essential services, the customer service centres, council chamber, landfill and transfer stations will not require a My Vaccine Pass at this stage.



WEIRD, WONDERFUL AND REPURPOSED - QUIXOTIC AQUATIC OPENS AT TAUPŌ MUSEUM

HOT ON THE heels of the popular Taupō Museum exhibitions Re-Cycled, Dog Show, CATalogue and Re-Tweet comes the latest offering: Quixotic Aquatic.

Quixotic Aquatic, the fifth of Taupō Museum's reduce, re-use, recycle, re-create exhibitions invited participants to create artworks and sculptures of creatures, real or imagined, with an aquatic theme.

Artists and creators were encouraged to imagine an underwater world of fun, weird and wonderfulness using materials that would and should not be found in our oceans, lakes and rivers.

The recycled, repurposed exhibitions have become an annual event in the museum calendar and Taupō Museum exhibitions officer Kerence Stephen says the visitor feedback is always positive, with many of the artworks creating laughter and fascination.

The Quixotic Aquatic exhibition is being held in the museum's main gallery from Saturday 11 December to Monday 7 February. From 15 December, visitors aged 12 years and over will be required to show their My Vaccine Pass for entry. Entry is free for Taupō District residents with proof of address and the museum is open 10am to 4.30pm daily.

