

First adopted:	29 August 2006
Next review date:	Nil
Document number:	A2067832
Sponsor/Group:	Head of Finance & Strategy



Speed Limit Bylaw 2018

Purpose and Scope

1. The purpose of this Bylaw is to set speed limits on all roads under the care, control or management of Taupō District Council.
2. The Bylaw is made under the authority of section 22AB of the *Land Transport Act 1998* and *Land Transport Rule: Setting of Speed Limits 2017*.

*Note:*¹ Other speeds limits may apply for certain vehicles or in certain situations as set out in the *Land Transport Act 1998* (and rules or regulations made under that act). For example: for heavy vehicles, or for passing a school bus.

Commencement

3. The Bylaw comes into force on 1 December 2018
4. The speed limits specified in the attached maps shall apply from 1 December 2018, or as specified otherwise in the attached maps.

Revocations

5. The Taupō District Council Speed Limit Bylaw 2011 is revoked at the time of the Taupō District Council Speed Limit Bylaw 2018 coming into force.

Definitions

6. Any words, phrases or expressions used in this Bylaw which have meanings assigned to them by the *Local Government Act 2002*, the *Land Transport Act 1998*, and rules and regulations made under the *Land Transport Act 1998* shall have the meanings as are respectively assigned in those Acts/Rules, unless inconsistent with the context in which such words occur.
7. In this Bylaw, if not inconsistent with the context:

Chief Executive	Means the chief executive of Council and any person delegated to perform any duties of the chief executive.
Council	Means Taupō District Council.
Rule	Means the Land Transport Rule: Setting of Speed Limits 2017.

Speed Limits

8. The Taupō District Council sets speed limits as specified in the attached Maps, which form part of this bylaw.

¹ Notes in this bylaw are for the benefit of the reader of the bylaw and are not operative provisions to be used by the Council.

9. Council may by resolution set speed limits on any road under the care, control or management of Council in any designated location in accordance with the requirements of the Rule. The Council will maintain a register of any speed limits set by resolution.

Note: Designated location refers to carparks; parks, reserves, and recreational areas; and other public or Council property or facilities.

Offences and Penalties

10. Every person commits an offence against this Bylaw who operates a vehicle in excess of the speed limits set by this Bylaw.

Note: Offences, penalties and fees relating to infringement of speed limits are provided for in the relevant provisions of the Land Transport Act 1998 (and rules or regulations made under that Act). These are enforced by the Police.

Maps

SPL 001/1	Mangakino area speed limits
SPL 002/1	Whakamaru area speed limits
SPL 003/1	Atiamuri area speed limits
SPL 004/1	Kinloch area speed limits
SPL 005/1	River Road area speed limits
SPL 006/1	Wairakei area speed limits
SPL 007/1	Mapara area speed limits
SPL 008/1	Acacia Bay area speed limits
SPL 009/1	Taupō area speed limits
SPL 009/2	Taupō North area speed limits
SPL 010/1	Five Mile Bay area speed limits
SPL 011/1	Waitahanui area speed limits
SPL 012/1	Hatepe area speed limits
SPL 013/1	Motutere area speed limits
SPL 014/1	Tauranga-Taupō area speed limits
SPL 015/1	Motuoapa area speed limits
SPL 016/1	Turangi area speed limits
SPL 017/1	Tokaanu area speed limits
SPL 018/1	Western Bays (Pukawa-Omori-Kuratau) area speed limits
SPL 019/1	Whareroa area speed limits
SPL 020/1	Aratiatia area speed limits
SPL 021/1	Rural Roads Northern Taupō District speed limits
SPL 021/2	Rural Roads Southern Taupō District speed limits

THIS BYLAW WAS MADE BY RESOLUTION [TDC2018XX/X] OF COUNCIL AT AN ORDINARY MEETING OF THE TAUPŌ DISTRICT COUNCIL HELD ON [XX JULY 2018].

IN WITNESS thereof the Common Seal]
of the Taupō District Council has hereby]
order in Council hereunto been affixed in]
the presence of:]

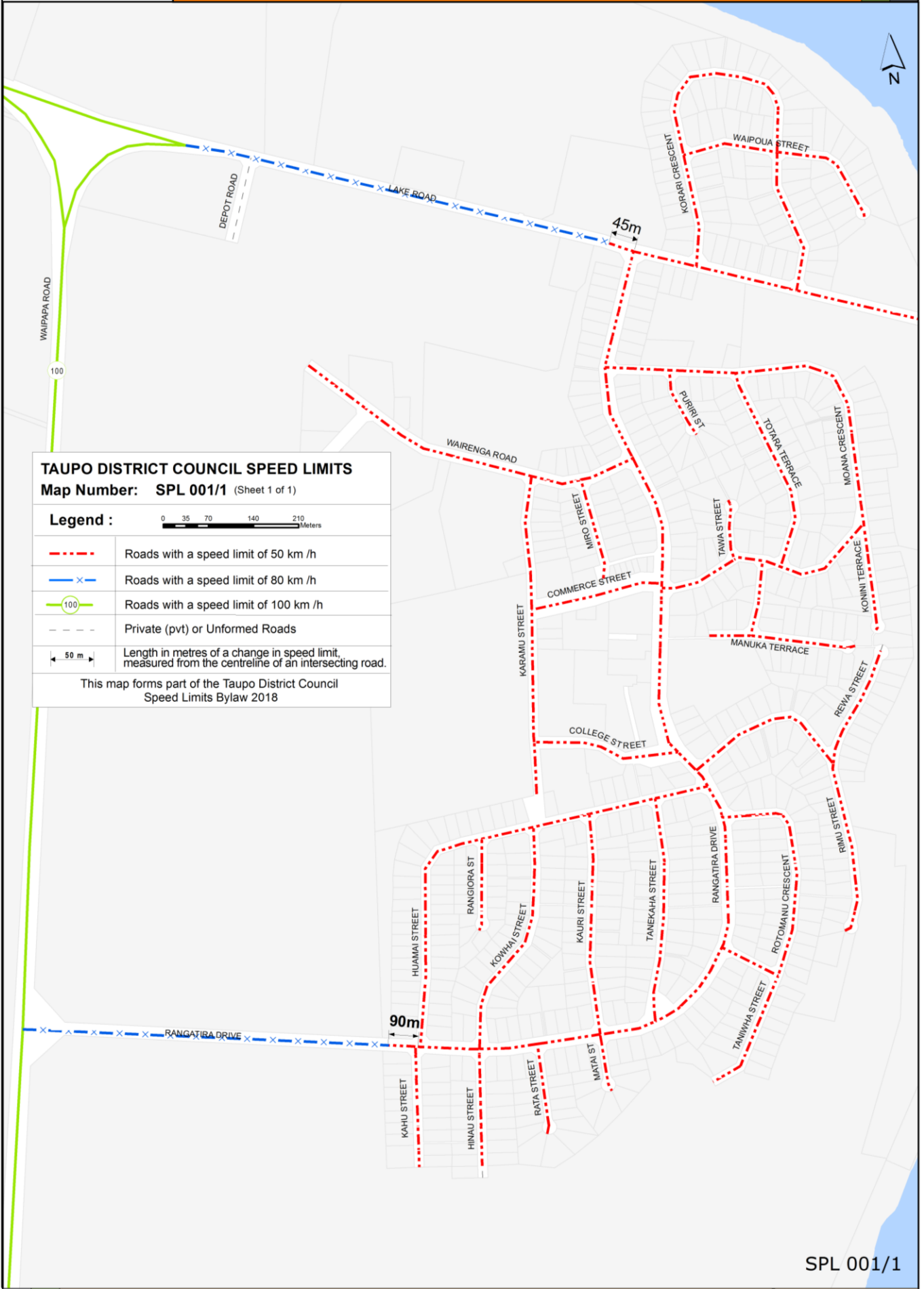
David Trewavas
MAYOR

Gareth Green
CHIEF EXECUTIVE

DRAFT



Speed Limits - Mangakino



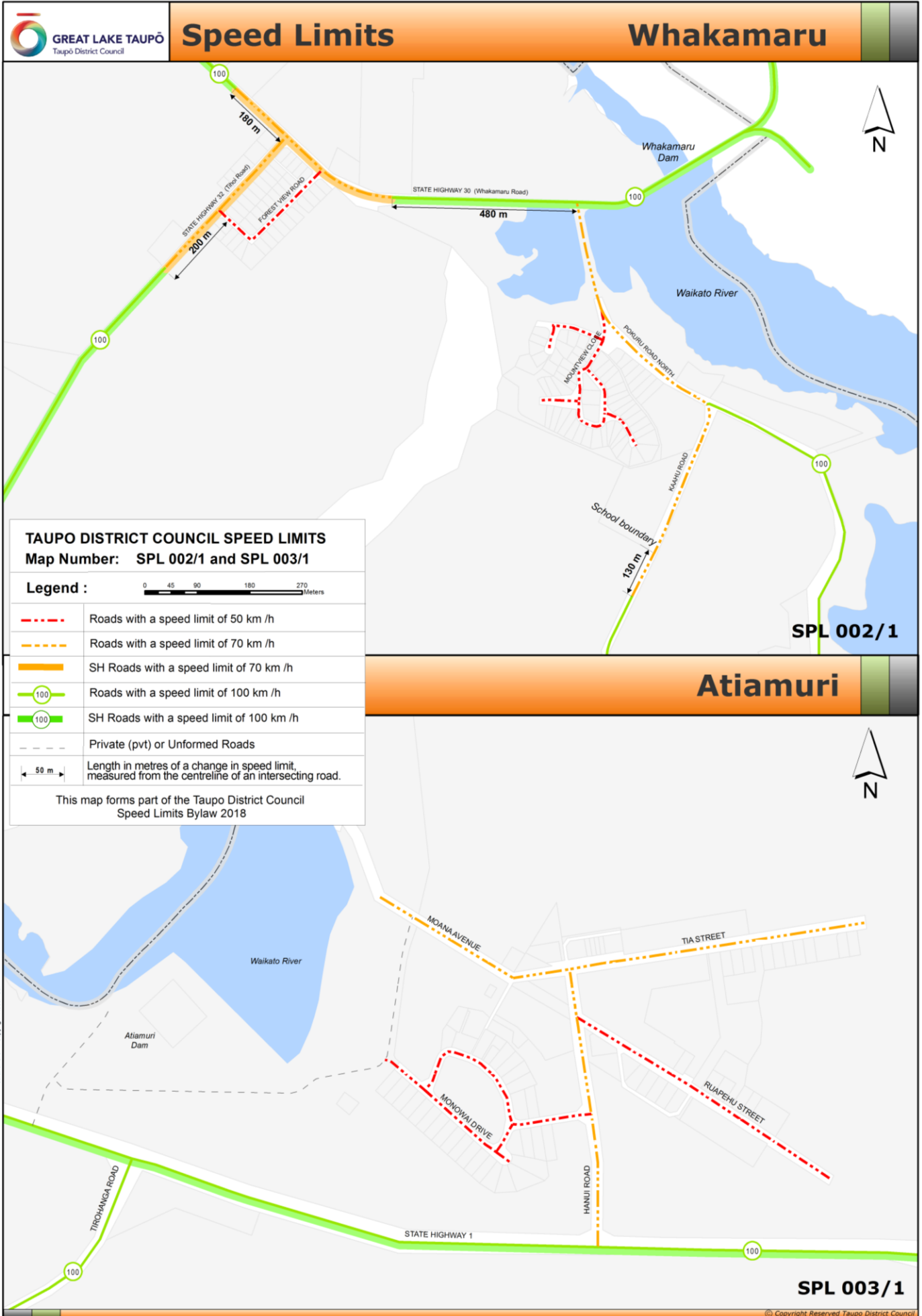
TAUPO DISTRICT COUNCIL SPEED LIMITS
 Map Number: **SPL 001/1** (Sheet 1 of 1)

Legend :

	Roads with a speed limit of 50 km /h
	Roads with a speed limit of 80 km /h
	Roads with a speed limit of 100 km /h
	Private (pvt) or Unformed Roads
	Length in metres of a change in speed limit, measured from the centreline of an intersecting road.

This map forms part of the Taupo District Council Speed Limits Bylaw 2018

Cadastral Information Sourced From Land Information New Zealand. Crown Copyright Reserved.



TAUPO DISTRICT COUNCIL SPEED LIMITS
 Map Number: SPL 002/1 and SPL 003/1

Legend :

	Roads with a speed limit of 50 km /h
	Roads with a speed limit of 70 km /h
	SH Roads with a speed limit of 70 km /h
	Roads with a speed limit of 100 km /h
	SH Roads with a speed limit of 100 km /h
	Private (pvt) or Unformed Roads
	Length in metres of a change in speed limit, measured from the centreline of an intersecting road.

This map forms part of the Taupo District Council Speed Limits Bylaw 2018

Cadastral Information Sourced From Land Information New Zealand. Crown Copyright Reserved.



Speed Limits - Kinloch

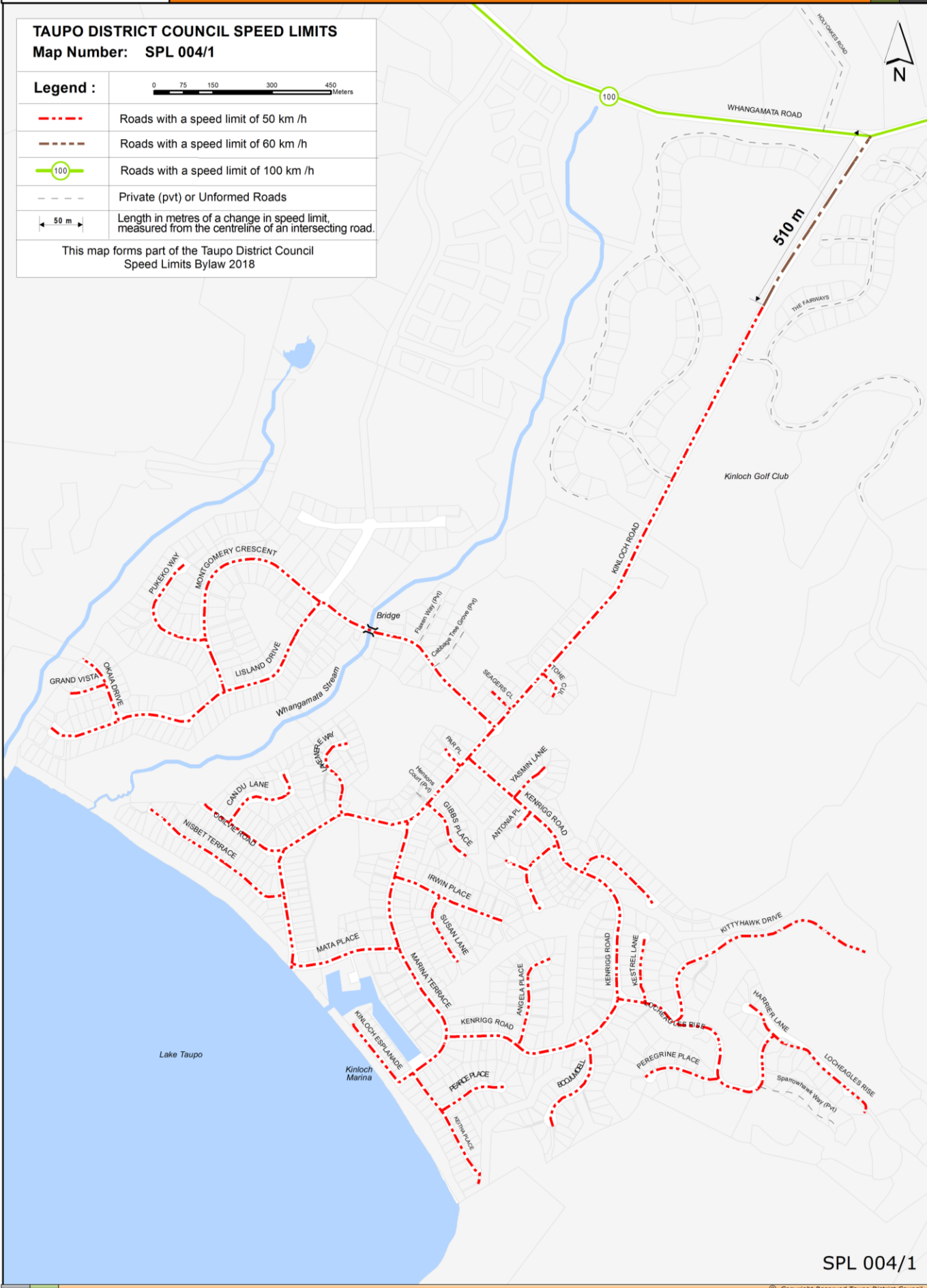
TAUPO DISTRICT COUNCIL SPEED LIMITS
Map Number: SPL 004/1

Legend :



- - - - - Roads with a speed limit of 50 km /h
- - - - - Roads with a speed limit of 60 km /h
- (100) Roads with a speed limit of 100 km /h
- - - - - Private (pvt) or Unformed Roads
- |< 50 m >| Length in metres of a change in speed limit, measured from the centreline of an intersecting road.

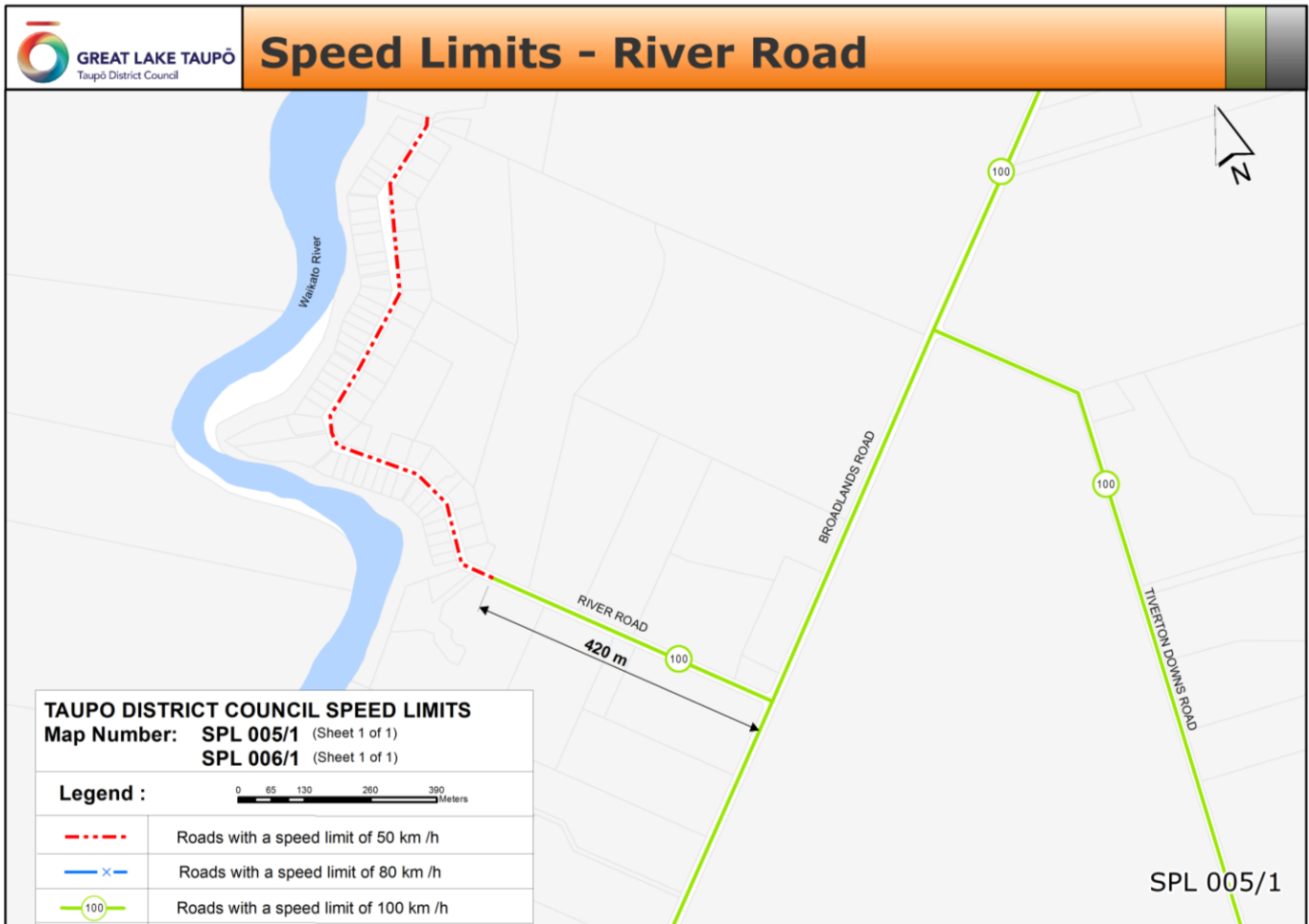
This map forms part of the Taupo District Council Speed Limits Bylaw 2018



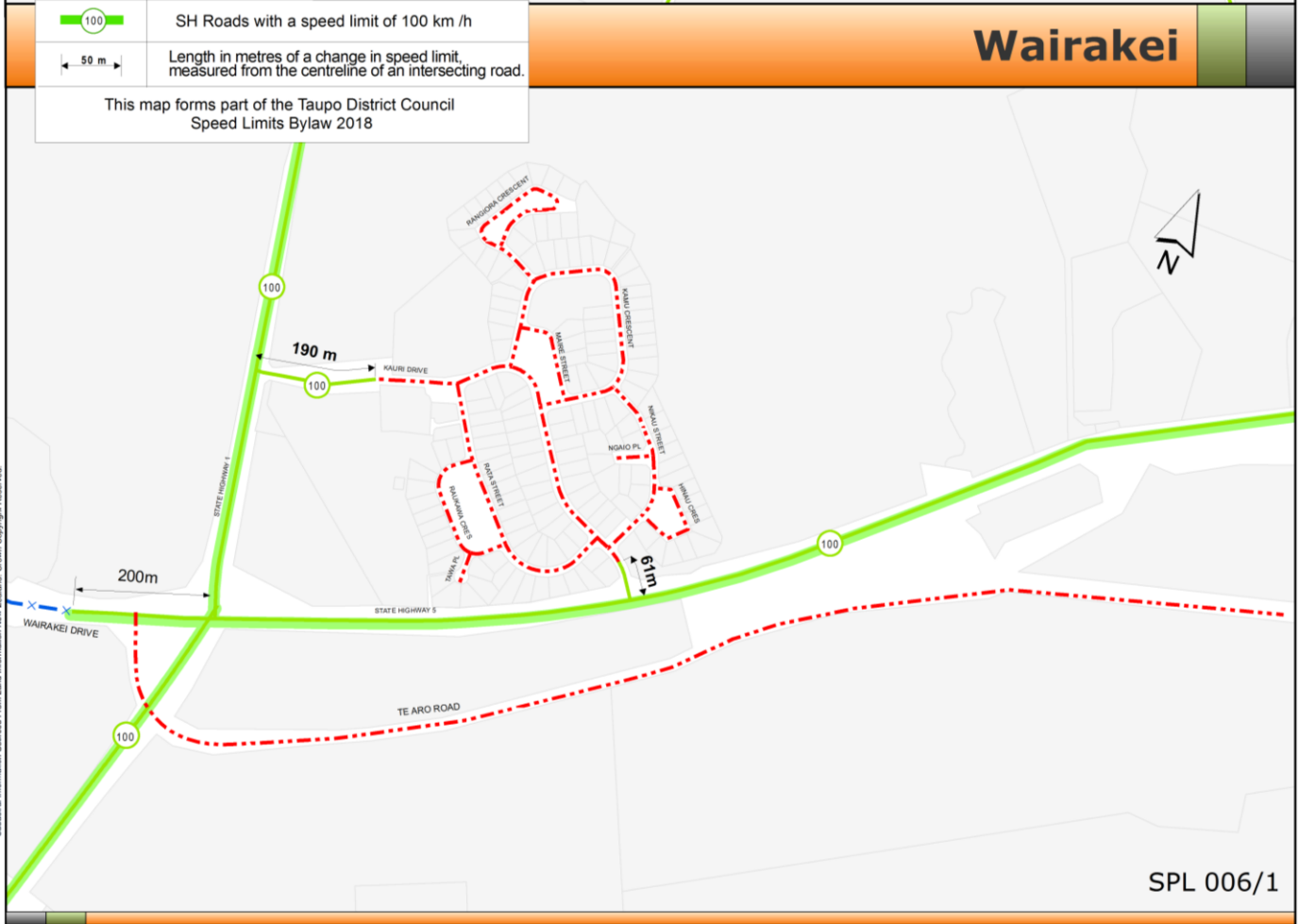
Cadastral information Sourced From Land Information New Zealand Crown Copyright Reserved.



Speed Limits - River Road



Wairakei





Speed Limits - Mapara

TAUPO DISTRICT COUNCIL SPEED LIMITS

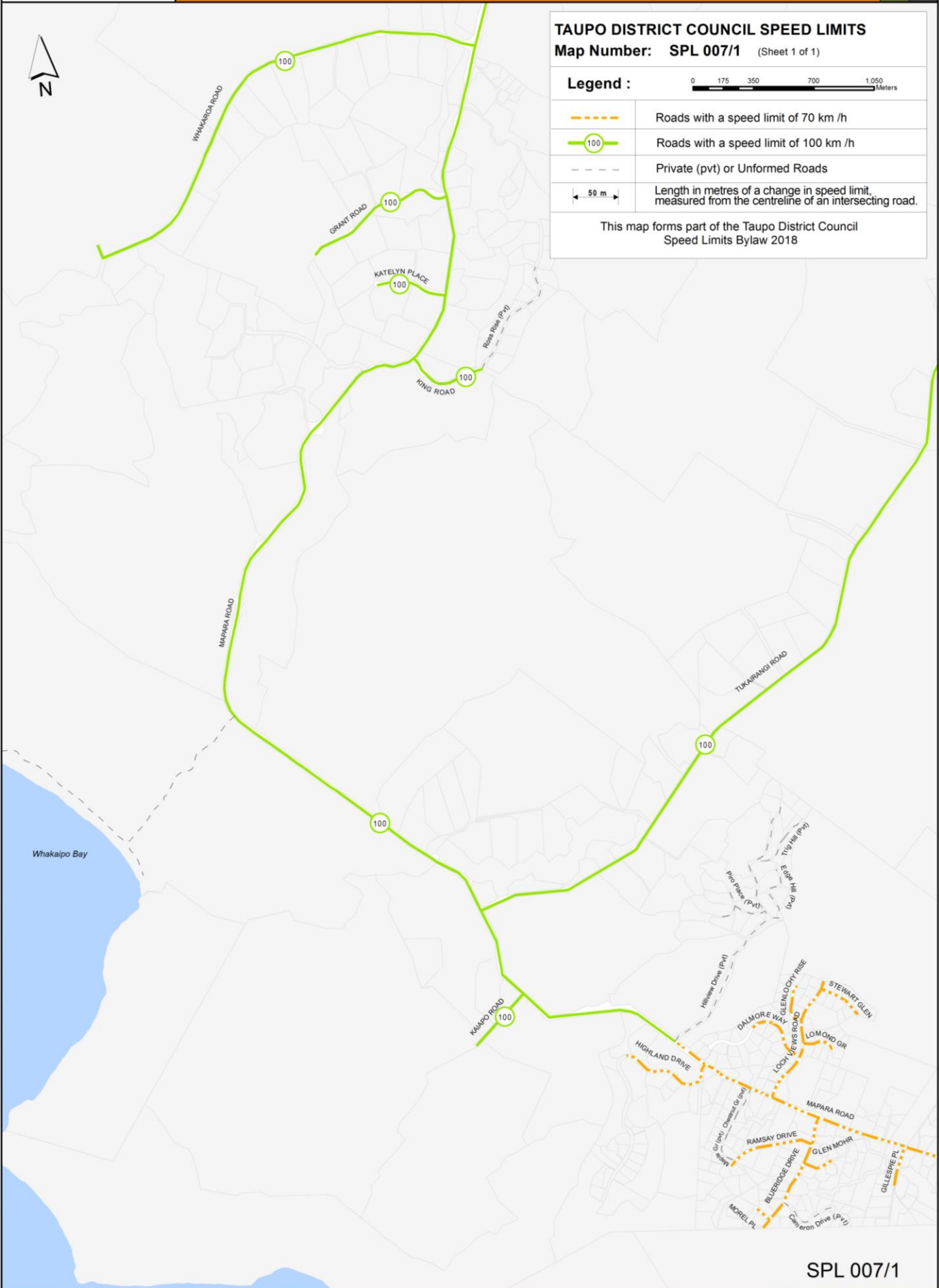
Map Number: **SPL 007/1** (Sheet 1 of 1)

Legend :



- Roads with a speed limit of 70 km /h
- Roads with a speed limit of 100 km /h
- Private (pvt) or Unformed Roads
- Length in metres of a change in speed limit, measured from the centreline of an intersecting road.

This map forms part of the Taupo District Council Speed Limits Bylaw 2018



Cadastral Information Sourced from Land Information New Zealand. Crown Copyright Reserved.



Speed Limits - Acacia Bay

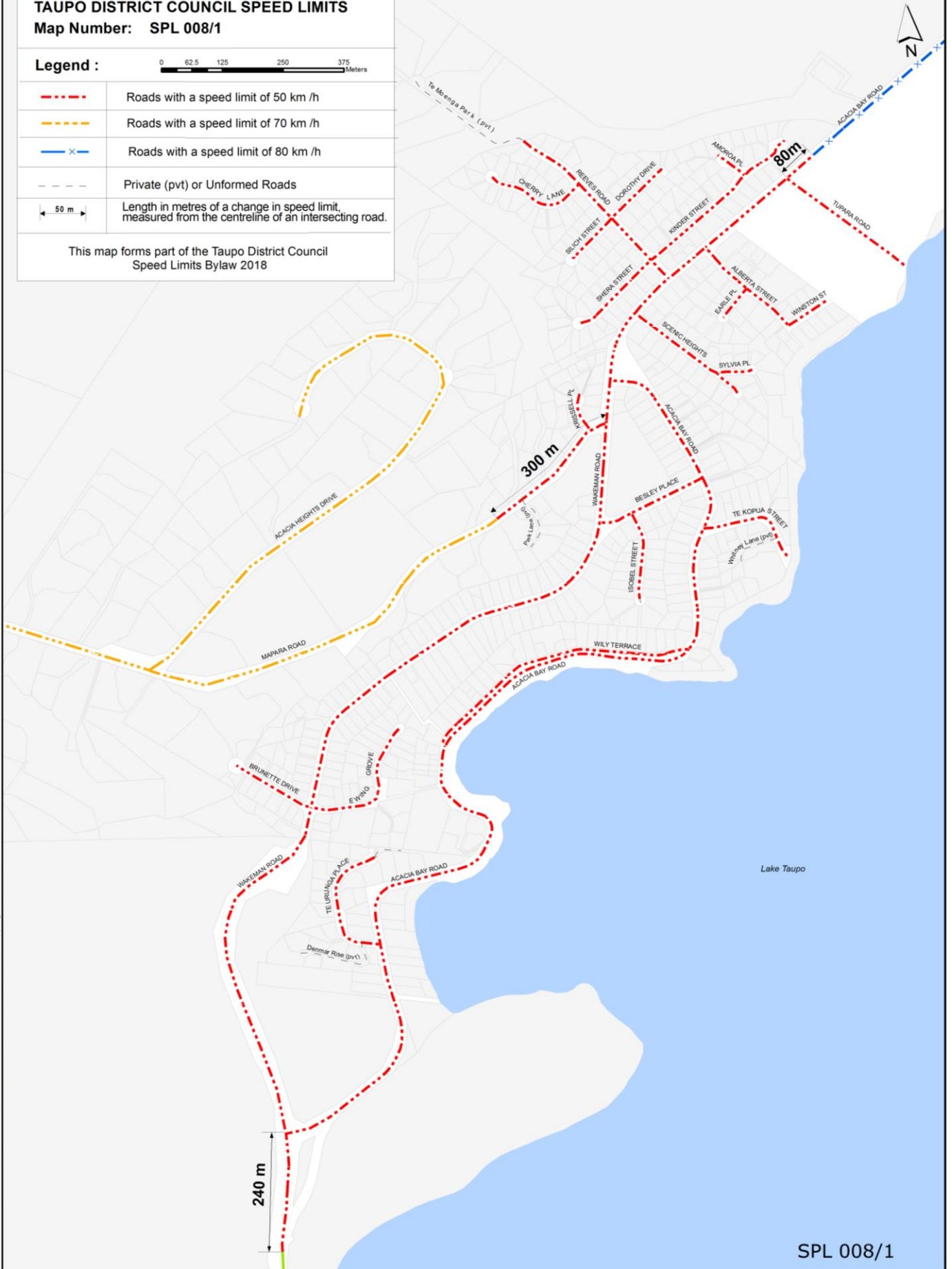
TAUPO DISTRICT COUNCIL SPEED LIMITS
Map Number: SPL 008/1

Legend :



- - - Roads with a speed limit of 50 km /h
- - - Roads with a speed limit of 70 km /h
- x - Roads with a speed limit of 80 km /h
- - - Private (pvt) or Unformed Roads
- ← 50 m → Length in metres of a change in speed limit, measured from the centreline of an intersecting road.

This map forms part of the Taupo District Council Speed Limits Bylaw 2018

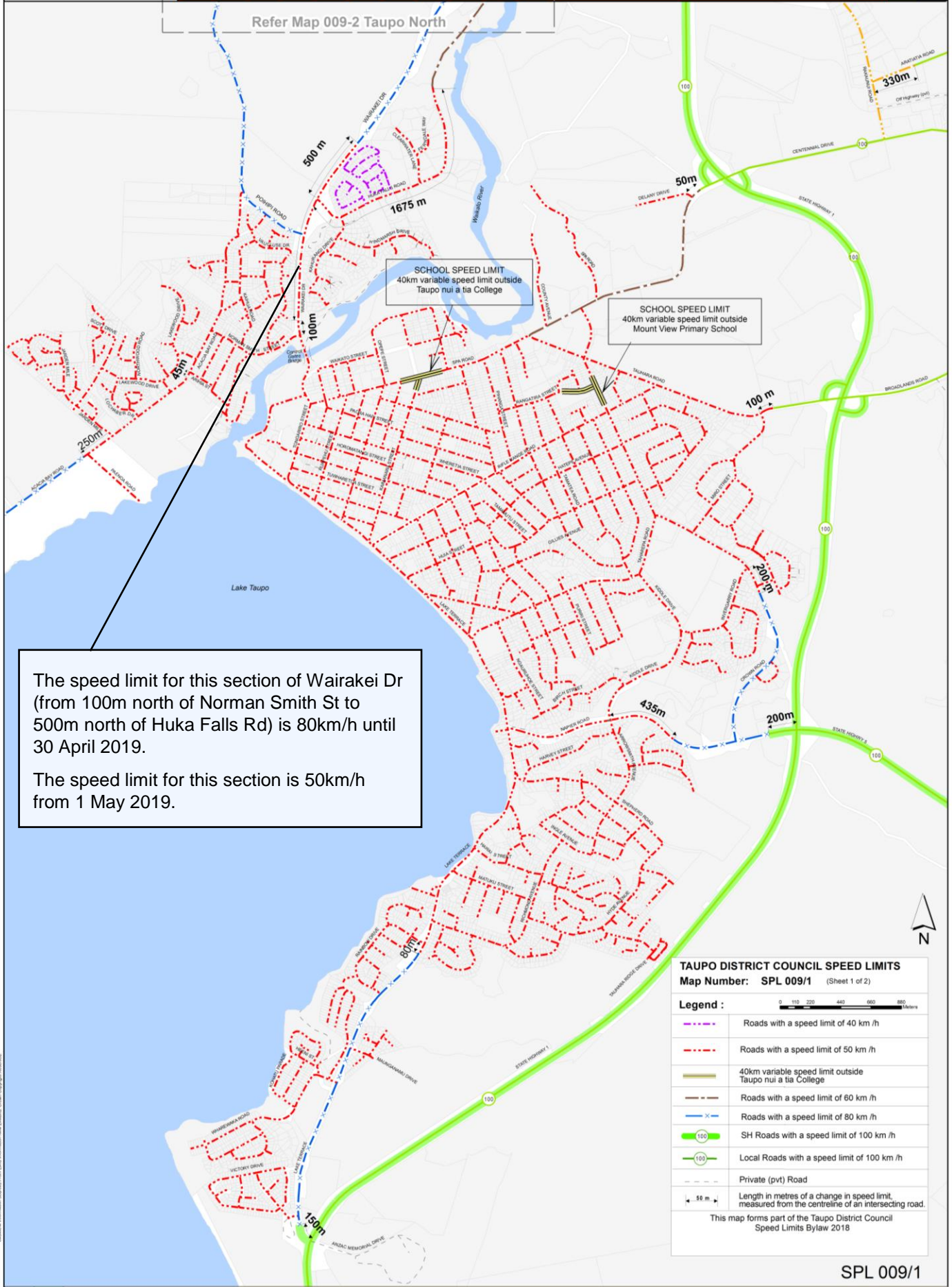


Celestial Information Sourced From Land Information New Zealand. Crown Copyright Reserved.



Speed Limits - Taupo

Refer Map 009-2 Taupo North



SCHOOL SPEED LIMIT
40km variable speed limit outside
Taupo nui a tia College

SCHOOL SPEED LIMIT
40km variable speed limit outside
Mount View Primary School

The speed limit for this section of Wairakei Dr (from 100m north of Norman Smith St to 500m north of Huka Falls Rd) is 80km/h until 30 April 2019.
The speed limit for this section is 50km/h from 1 May 2019.

TAUPO DISTRICT COUNCIL SPEED LIMITS
Map Number: SPL 009/1 (Sheet 1 of 2)

Legend :

- - - - - Roads with a speed limit of 40 km/h
- - - - - Roads with a speed limit of 50 km/h
- - - - - 40km variable speed limit outside Taupo nui a tia College
- - - - - Roads with a speed limit of 60 km/h
- - - - - Roads with a speed limit of 80 km/h
- 100 SH Roads with a speed limit of 100 km/h
- 100 Local Roads with a speed limit of 100 km/h
- - - - - Private (pvt) Road

Length in metres of a change in speed limit, measured from the centreline of an intersecting road.

This map forms part of the Taupo District Council Speed Limits Bylaw 2018



Speed Limits - Taupo North

TAUPO DISTRICT COUNCIL SPEED LIMITS

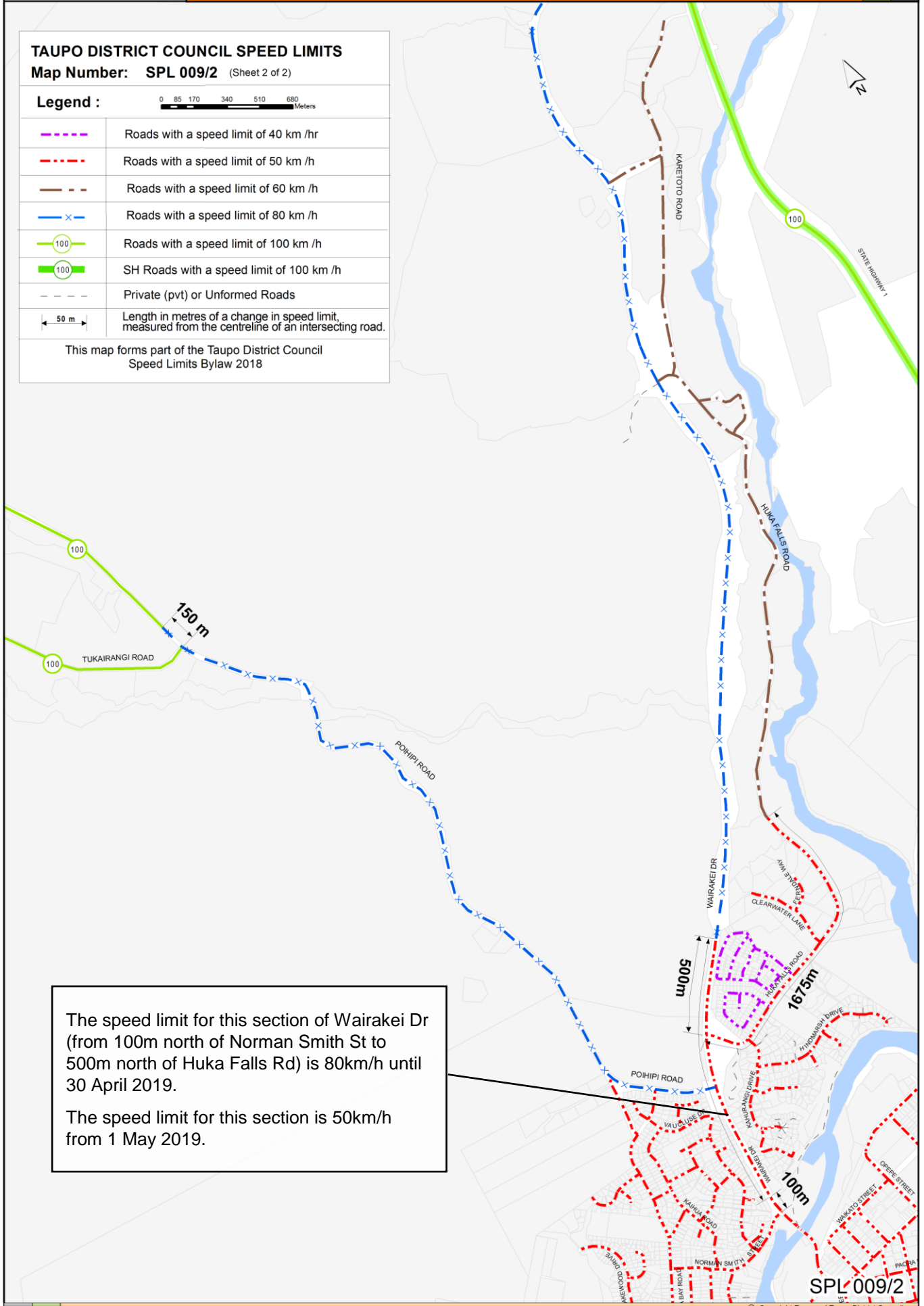
Map Number: **SPL 009/2** (Sheet 2 of 2)

Legend :



	Roads with a speed limit of 40 km /hr
	Roads with a speed limit of 50 km /h
	Roads with a speed limit of 60 km /h
	Roads with a speed limit of 80 km /h
	Roads with a speed limit of 100 km /h
	SH Roads with a speed limit of 100 km /h
	Private (pvt) or Unformed Roads
	Length in metres of a change in speed limit, measured from the centreline of an intersecting road.

This map forms part of the Taupo District Council Speed Limits Bylaw 2018



The speed limit for this section of Wairakei Dr (from 100m north of Norman Smith St to 500m north of Huka Falls Rd) is 80km/h until 30 April 2019.

The speed limit for this section is 50km/h from 1 May 2019.

Cartographic Information Sourced From Land Information New Zealand. Crown Copyright Reserved.



Speed Limits - Five Mile Bay

TAUPO DISTRICT COUNCIL SPEED LIMITS

Map Number: SPL 010/1 (Sheet 1 of 1)

Legend :



Roads with a speed limit of 50 km /h



SH Roads with a speed limit of 100 km /h

This map forms part of the Taupo District Council Speed Limits Bylaw 2018



TAWHAA STREET

STATE HIGHWAY 1

MAHUTA ROAD

Lake Taupo

100

100

Speed Limits - Waitahanui

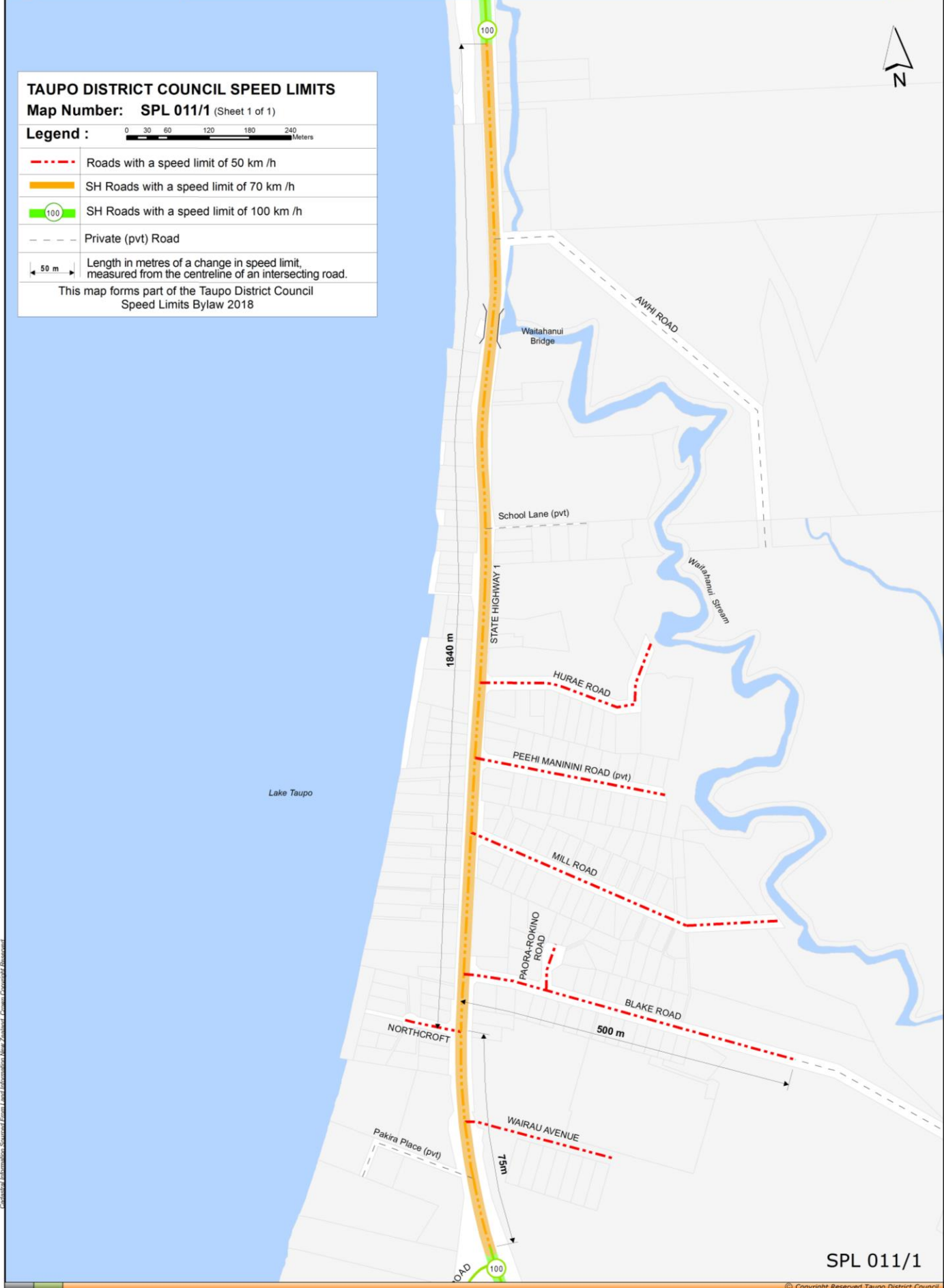


TAUPO DISTRICT COUNCIL SPEED LIMITS
Map Number: SPL 011/1 (Sheet 1 of 1)

Legend :

- Roads with a speed limit of 50 km /h
- SH Roads with a speed limit of 70 km /h
- SH Roads with a speed limit of 100 km /h
- Private (pvt) Road
- Length in metres of a change in speed limit, measured from the centreline of an intersecting road.

This map forms part of the Taupo District Council Speed Limits Bylaw 2018





Speed Limits - Hatepe



SPL 012/1

Motutere



SPL 013/1

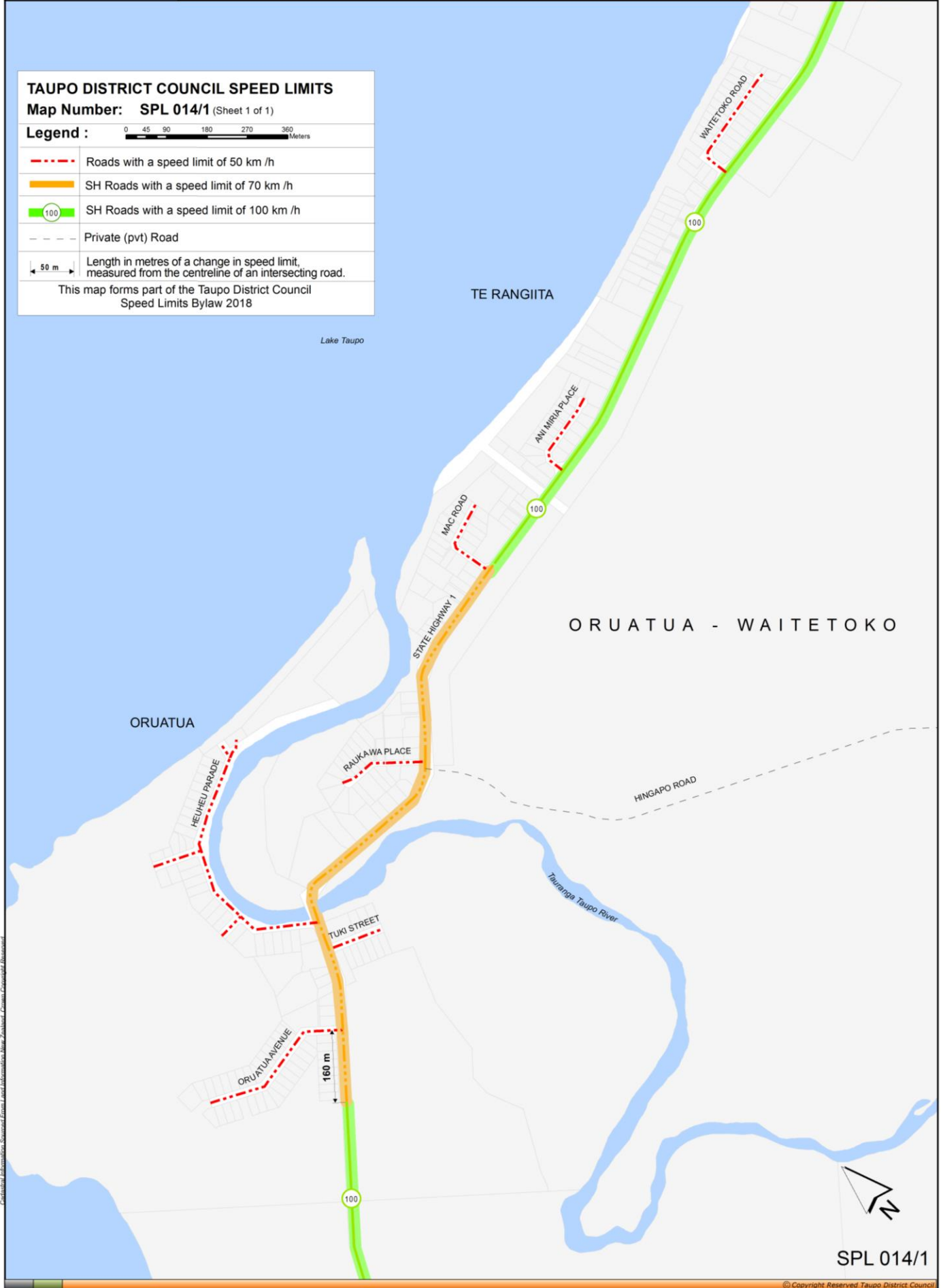
TAUPO DISTRICT COUNCIL SPEED LIMITS

Map Number: SPL 014/1 (Sheet 1 of 1)

Legend : Meters

- Roads with a speed limit of 50 km /h
- SH Roads with a speed limit of 70 km /h
- SH Roads with a speed limit of 100 km /h
- Private (pvt) Road
- Length in metres of a change in speed limit, measured from the centreline of an intersecting road.

This map forms part of the Taupo District Council Speed Limits Bylaw 2018



Confidential Information. Sourced From Land Information New Zealand. Crown Copyright Reserved.



Speed Limits - Motuoapa

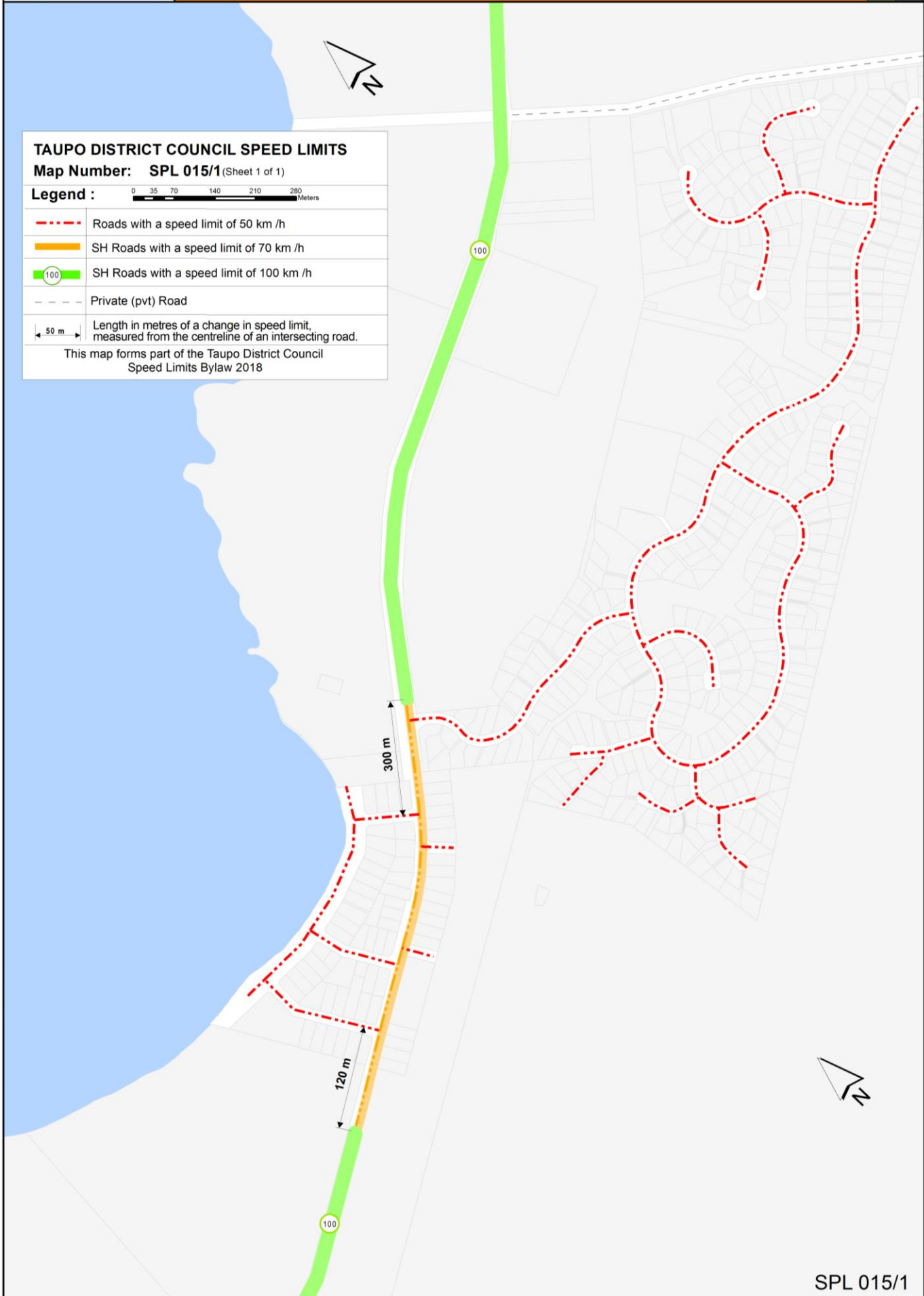
TAUPO DISTRICT COUNCIL SPEED LIMITS

Map Number: **SPL 015/1** (Sheet 1 of 1)

Legend :

- Roads with a speed limit of 50 km /h
- SH Roads with a speed limit of 70 km /h
- SH Roads with a speed limit of 100 km /h
- Private (pvt) Road
- Length in metres of a change in speed limit, measured from the centreline of an intersecting road.

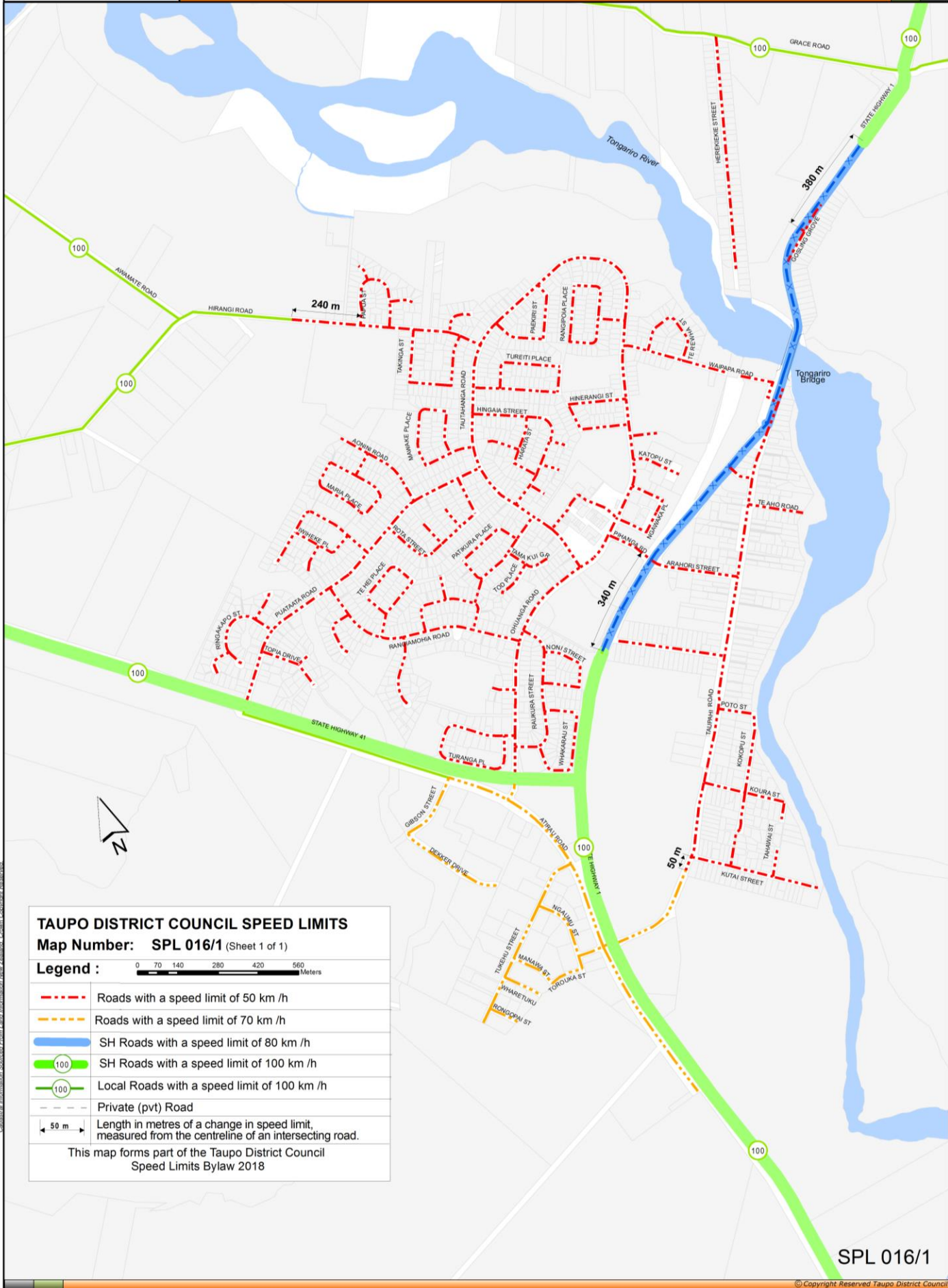
This map forms part of the Taupo District Council Speed Limits Bylaw 2018



Cadastral Information Sourced From Land Information New Zealand. Crown Copyright Reserved.



Speed Limits - Turangi



TAUPO DISTRICT COUNCIL SPEED LIMITS
 Map Number: **SPL 016/1** (Sheet 1 of 1)

Legend :

- - - Roads with a speed limit of 50 km /h
- - - Roads with a speed limit of 70 km /h
- SH Roads with a speed limit of 80 km /h
- SH Roads with a speed limit of 100 km /h
- 100 Local Roads with a speed limit of 100 km /h
- - - Private (pvt) Road
- 50 m Length in metres of a change in speed limit, measured from the centreline of an intersecting road.

This map forms part of the Taupo District Council Speed Limits Bylaw 2018

Speed Limits - Tokaanu



TAUPO DISTRICT COUNCIL SPEED LIMITS
Map Number: SPL 017/1 (Sheet 1 of 1)

Legend : 0 25 50 100 150 200 Meters

- - - - - Roads with a speed limit of 50 km /h
- - - - - Roads with a speed limit of 70 km /h
- SH Roads with a speed limit of 80 km /h
- SH Roads with a speed limit of 100 km /h
- Local Roads with a speed limit of 100 km /h
- - - - - Private (pvt) Road
- ← 50 m → Length in metres of a change in speed limit, measured from the centreline of an intersecting road.

This map forms part of the Taupo District Council Speed Limits Bylaw 2018

Cadastral Information Sourced From Land Information New Zealand. Crown Copyright Reserved.



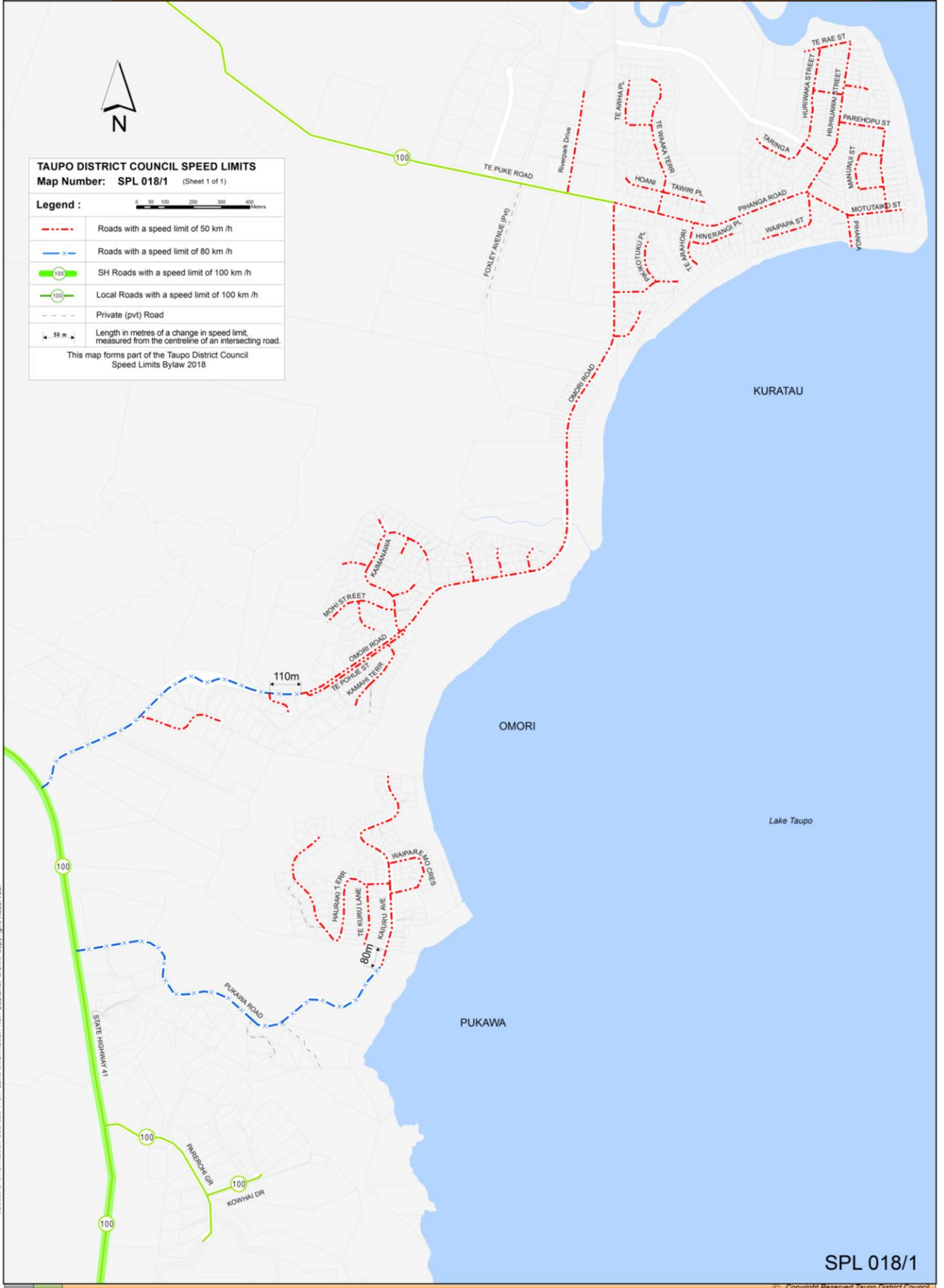
Speed Limits - Western Bays

TAUPO DISTRICT COUNCIL SPEED LIMITS
 Map Number: SPL 018/1 (Sheet 1 of 1)

Legend :

- - - - - Roads with a speed limit of 50 km /h
- x - x - x - Roads with a speed limit of 80 km /h
- 100 SH Roads with a speed limit of 100 km /h
- 100 Local Roads with a speed limit of 100 km /h
- - - - - Private (pvt) Road
- ← 50 m → Length in metres of a change in speed limit, measured from the centreline of an intersecting road.

This map forms part of the Taupo District Council Speed Limits Bylaw 2018



Cadastral Information Sourced from Land Information New Zealand. Crown Copyright Reserved.



Speed Limits - Whareroa

TAUPO DISTRICT COUNCIL SPEED LIMITS

Map Number: SPL 019/1 (Sheet 1 of 1)

Legend :



- - - - Roads with a speed limit of 50 km /h
- (100) Local Roads with a speed limit of 100 km /h
- - - - Private (pvt) Road
- ↔ 50 m ↔ Length in metres of a change in speed limit, measured from the centreline of an intersecting road.

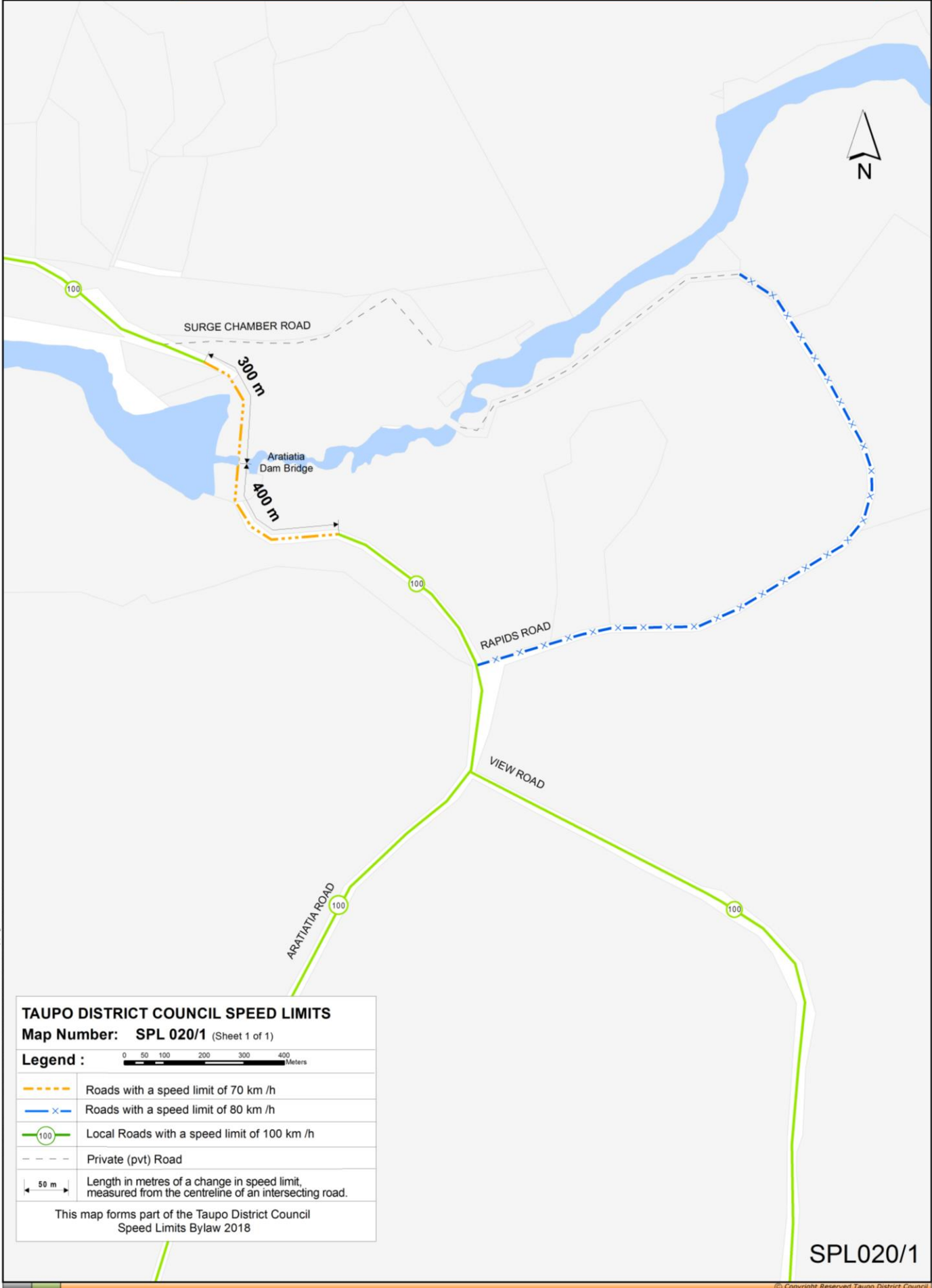
This map forms part of the Taupo District Council Speed Limits Bylaw 2018



Cadastral Information Sourced From Land Information New Zealand. Crown Copyright Reserved



Speed Limits - Aratiatia



TAUPO DISTRICT COUNCIL SPEED LIMITS
Map Number: SPL 020/1 (Sheet 1 of 1)

Legend :

	Roads with a speed limit of 70 km /h
	Roads with a speed limit of 80 km /h
	Local Roads with a speed limit of 100 km /h
	Private (pvt) Road
	Length in metres of a change in speed limit, measured from the centreline of an intersecting road.

This map forms part of the Taupo District Council Speed Limits Bylaw 2018

SPL020/1

Cadastral Information Sourced From Land Information New Zealand. Crown Copyright Reserved.



Speed Limits - Rural Roads

NORTHERN TAUPŌ DISTRICT



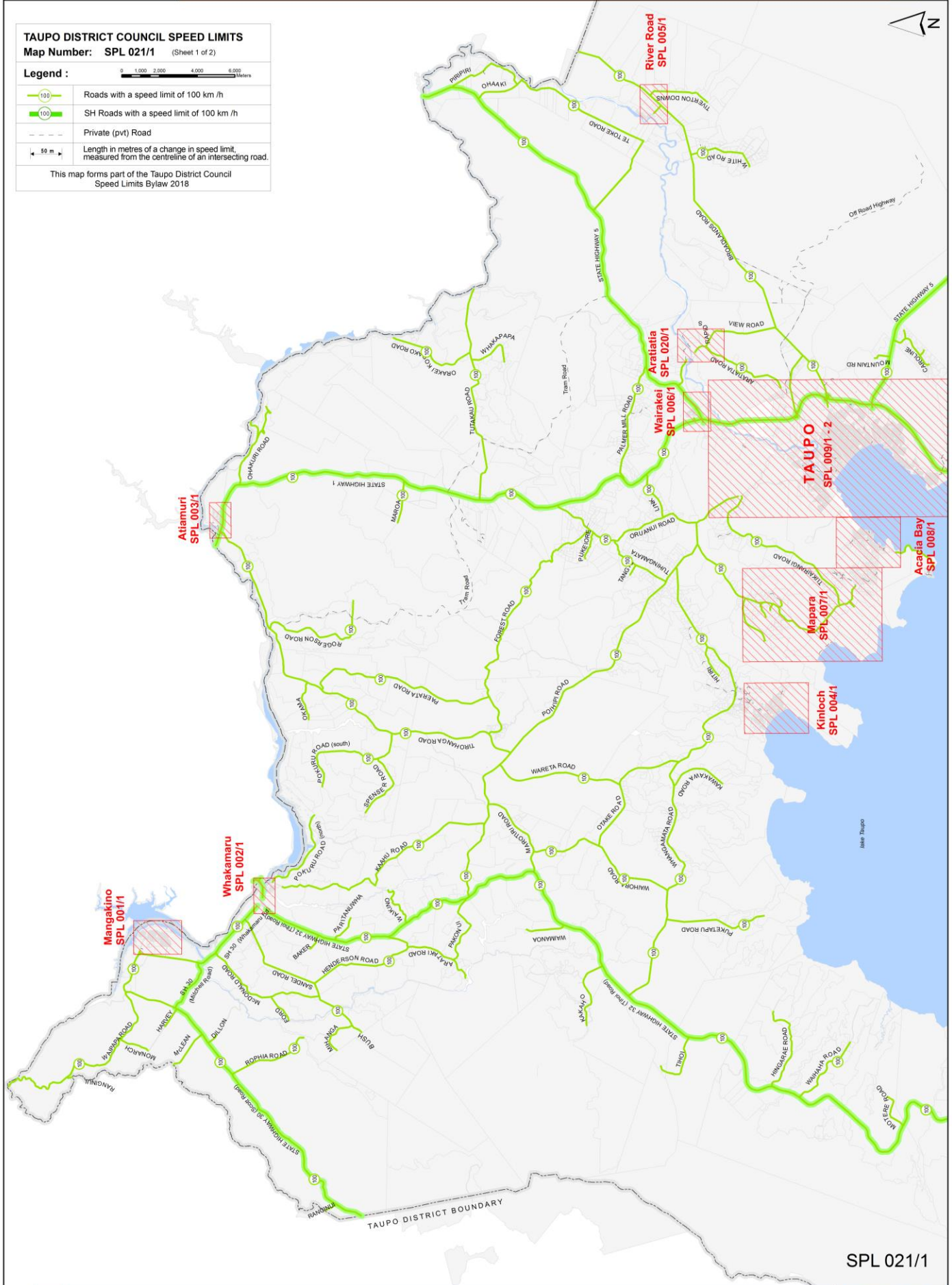
TAUPŌ DISTRICT COUNCIL SPEED LIMITS

Map Number: SPL 021/1 (Sheet 1 of 2)

Legend :

- Roads with a speed limit of 100 km /h
- SH Roads with a speed limit of 100 km /h
- Private (pvt) Road
- Length in metres of a change in speed limit, measured from the centreline of an intersecting road.

This map forms part of the Taupo District Council Speed Limits Bylaw 2018





Speed Limits - Rural Roads

SOUTHERN TAUPŌ DISTRICT



TAUPO DISTRICT COUNCIL SPEED LIMITS
 Map Number: **SPL 021/2** (Sheet 1 of 2)

Legend :

	Roads with a speed limit of 100 km /h
	SH Roads with a speed limit of 100 km /h
	Private (pvt) Road
	Length in metres of a change in speed limit, measured from the centreline of an intersecting road.

This map forms part of the Taupo District Council Speed Limits Bylaw 2018

